



**FITTINGS & VALVES**

**35  
YEARS  
OF EVOLUTION.**



# STRONG CONNECTION

## CONSTANT EVOLUTION

Experience fuels our progress. We constantly refine our products, embrace cutting-edge technologies, and invest in research and development.

This mindset enables us to not just meet expectations – but set new benchmarks. Innovation is in our DNA, and every solution is smart, durable, and future-ready.

For over 35 years, FOX has led the way in injection-molded fittings and tools for gas, water, and hydrogen networks. We design innovative, high-performance solutions that keep industries moving and set new standards for reliability and efficiency.

Thousands of successful projects worldwide showcase our commitment to durability, smart engineering, and dependable performance. By continuously advancing technology and working closely with our customers, FOX delivers solutions that not only meet today's demands but anticipate the challenges of tomorrow.

## WORLDWIDE STRENGTH

Operating in more than 80 countries, FOX combines global reach with local expertise. Our headquarters and state-of-the-art facilities in Poland are supported by branches in Romania, Italy, Spain, the UAE, and Saudi Arabia.

This international footprint ensures fast delivery, flexible logistics, and hands-on support where our customers need it most. Every investment is unique - and so are our solutions.





# INNOVATION

IN EVERY LINE

FOX's commitment to innovation is embodied in our fully automated production lines. With robotics, real-time monitoring, and precision engineering, we ensure every fitting meets the highest standards.

Streamlined processes deliver faster cycles without ever compromising durability, enabling quick responses to global demand. This automation not only boosts efficiency but also drives sustainability by optimizing materials and reducing energy use. At FOX, automation means delivering high-quality, reliable products – every single time.



## QUALITY AT THE CORE

At FOX, quality drives everything we do. For more than three decades, we have combined advanced technology with strict quality assurance to deliver solutions that consistently meet the highest standards of safety, reliability, and efficiency.

Every FOX fitting is made from PE100-RC material and undergoes extensive testing under strict production release controls in our in-house laboratory. The result is precision, consistency, and performance our customers can trust – project after project.

- |                             |                               |
|-----------------------------|-------------------------------|
| WaterMark <b>AU</b>         | WRAS <b>GB</b>                |
| BULAQUA Standardt <b>BG</b> | IGH, VIK-HR <b>HR</b>         |
| SVGW <b>CH</b>              | IIP <b>IT</b>                 |
| DVGW, DBI <b>DE</b>         | ISO, UDT, INiG, PZH <b>PL</b> |
| DK-VAND <b>DK</b>           | NWC <b>SA</b>                 |
| Sonelgaz <b>DZ</b>          | Nordic PolyMark <b>SE</b>     |
| NF <b>FR</b>                | ANQAS <b>MY</b>               |



# UNIQUE SOLUTIONS



### ENGINEERED

to perform even in the toughest environments. Reliable and versatile - suitable for gas, water, hydrogen, compressed air, glycol systems, and a wide range of industrial networks.



### H2 READY

developing climate friendly solutions FOX products are suitable for all purpose hydrogen networks. Supporting green hydrogen technology we create more sustainable and low carbon world.



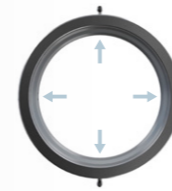
### PE100-RC MATERIAL

trusted wherever reliability matters. It delivers exceptional resistance to crack propagation, ensuring greater installation safety and extending the service life of both fittings and the entire pipeline.



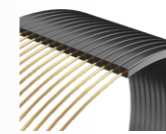
### FULL DIAMETER RANGE 20-1000mm

one size doesn't fit all - so we offer them all! From small to large, complete FOX range ensures the perfect fitting for every project.



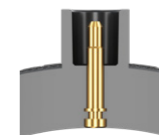
### MULTI-POINT INJECTION

a unique manufacturing method that delivers perfectly balanced material flow, ensuring the highest possible dimensional stability and consistent quality across every fitting.



### PE COVERED WIRINGS

provide fast and even heat transfer into the polyethylene, creating a stronger and more durable bond between polymer chains. They also protect against external conditions and short circuits.



### UNIVERSAL CONNECTORS

perfect fit, every time! Diameters from 4.0 to 4.7 mm - compatible with all welding machines available on the market. 40V voltage standard across all FOX products.



### FULL TRACEABILITY

every FOX fitting carries a unique Traceability Code - guarantee of full product transparency. It details the batch number, product type, producer, dimensions, raw material, and granulate source - ensuring trust, safety, and accountability at every stage.

# SUSTAINABLE FUTURE



## RENEWABLE ENERGY USE

Green energy powers our progress. A growing share of our production relies on renewable sources, lowering emissions and driving a cleaner tomorrow.



## EXTENDED LIFE SPAN

FOX products are built to last – durable, reliable, and designed to reduce replacements while protecting your investment and the planet.



## ENERGY-EFFICIENT PRODUCTION LINES

Efficiency is FOX standard. All production lines are designed to be energy-smart, reducing consumption while maintaining top-level performance and quality.



## REDUCTION OF WASTE

and used materials. Less is more. By continuously improving our processes, we minimize material use and cut down on waste, delivering smarter solutions with a lighter footprint.



## REUSE OF HEAT

Nothing goes to waste. The heat generated during production is recovered and reused in other processes, transforming excess energy into greater efficiency.



## THE USE OF RECYCLED PLASTICS

We give materials a second life. By integrating recycled plastics into non-technical parts, FOX helps close the loop and reduce reliance on virgin resources.



## OPTIMIZED PACKAGING

Better for you, better for the planet. Our packaging is designed to be compact and efficient, made from recycled materials to reduce transport impact and waste.



## PAPERLESS MANUALS

Sustainability goes digital. All FOX manuals are now available in electronic form, accessible through a QR code placed directly on each product label – saving resources and offering quick, eco-friendly access to essential informations.

**PE 100-RC  
MATERIAL**

The raw material complies with the requirements of EN 1555 and EN 12201. Electrofusion and spigot fittings are made of PE 100-RC.

Parameter	Properties	Unit of measure	Test method
Density	≥ 930	kg/m <sup>3</sup>	ISO 1183-1
Melt-flow rate (MFR)	from 0,2 to 1,4	g/10 min	ISO 1133
Oxidation induction time	≥ 20	min	ISO 11357-6
Minimum required strength (MRS)	10	MPa	ISO 12162
Color	Black	-	-

**GEOMETRICAL  
CHARACTERISTICS**

Measurements of dimensions comply with requirements of ISO 3126. All dimensions of fittings comply with requirements of EN 1555 and EN 12201.

**RESISTANCE  
TO INTERNAL PRESSURE**

Gas	Maximum operation pressure (MOP)	
	Water	Hydrogen
10 bar - for SDR 11	PN16 for SDR 11	10 bar - for SDR 11
5 bar - for SDR 17	PN10 for SDR 17	5 bar - for SDR 17

**MARKING**

Data	Feature or symbol
Standard number	EN 12201 EN 1555
Trademark	FOX
Nominal diameter of the pipe	e.g. 110
Material	e.g. PE100RC
SDR of the fitting	e.g. SDR 11
SDR welding range (pipe SDR)	e.g. SDR 11 - SDR 17
Applications	e.g. gas/water/hydrogen
Manufacturing date	e.g. 01.2020



**ELECTROFUSION  
FITTINGS 12**

**PE/BRASS & PE/STEEL  
TRANSITIONS 36**

**PE BALL-VALVES 44**

**SPIGOT  
FITTINGS 52**

**FLANGES 83**

# ELECTROFUSION FITTINGS

Electrofusion fittings are manufactured using modern, automated lines for plastic processing. It guarantees the high and stable quality of the detail, trouble-free installation and durability of the connection, no matter what medium is transported in the pipeline.



**UNIVERSAL CONNECTORS**  
diameter from 4.0 to 4,7 mm  
(suitable for all welding machines)

**40V VOLTAGE**  
always for FOX products

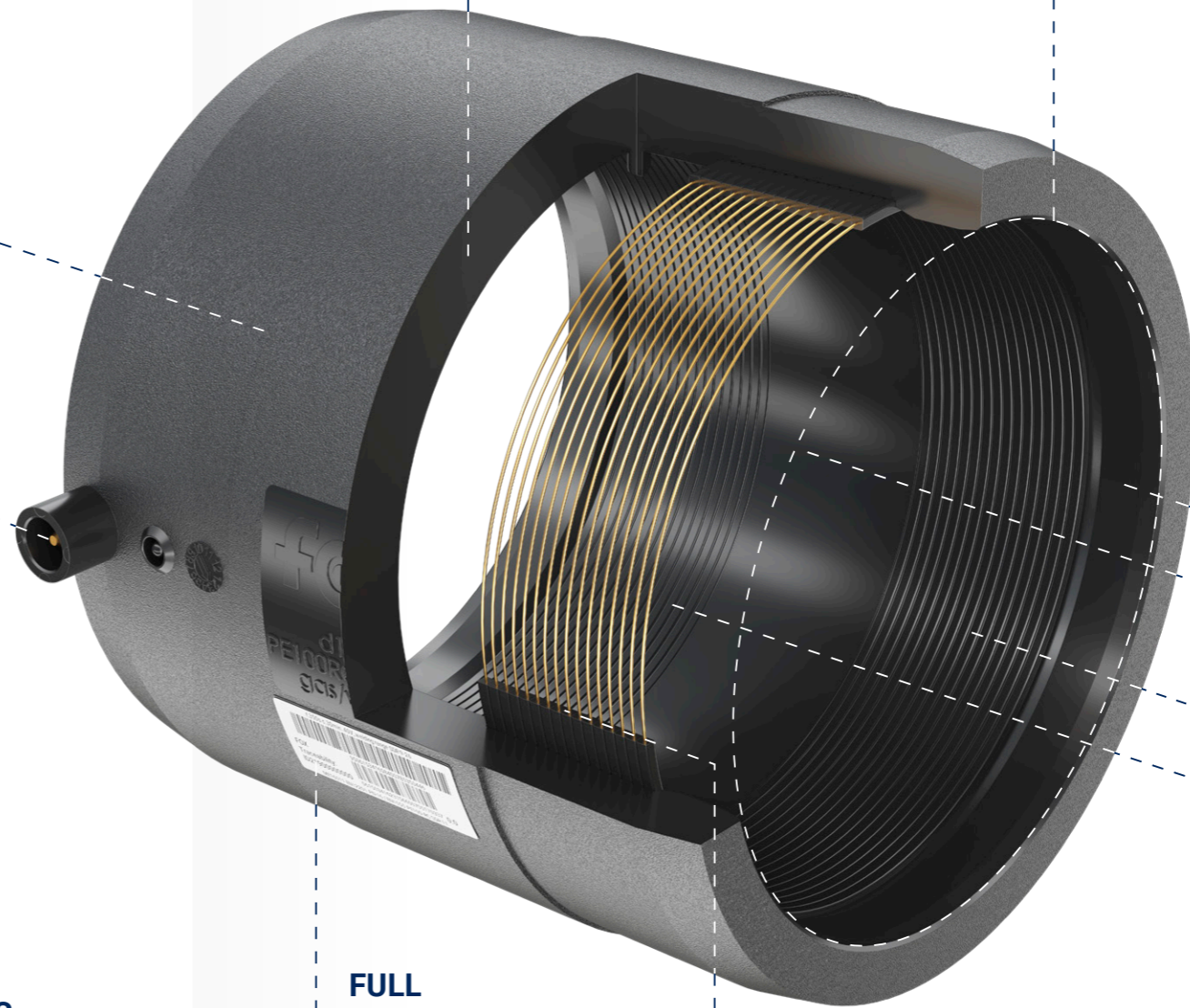
**PE 100-RC**  
for ultimate strength  
and crack resistance

**SUITABLE**  
for gas, water, hydrogen,  
compressed air, glycol systems

**MOP**  
up to 25 bar

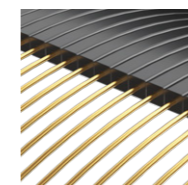
**FULL DIAMETER**  
range 20-630 mm

**WIDE COLD ZONES**  
preventing the flow  
of the plasticized PE



**FULL TRACEABILITY**  
system

**LONG HEATING ZONES**  
for larger connection area



**WIRINGS PROTECTED**  
against mechanical damage  
and short circuit



## ELECTROFUSION COUPLER

SDR 11



water  
16 bar



gas  
10 bar



hydrogen  
10 bar



PE 100-RC  
material



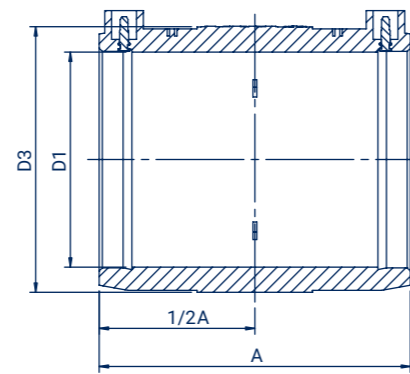
10 MPa



removable  
center stop



355 - 630  
no center stop



Size D1 (mm)	Code	A (mm)	D3 (mm)	Weight (kg)	Packing
20	ME02011	84	30	0,04	200
25	ME02511	84	36	0,05	200
32	ME03211	84	43	0,05	180
40	ME04011	92	52	0,08	150
50	ME05011	93	64	0,11	100
63	ME06311	114	79	0,18	50
75	ME07511	135	97	0,35	30
90	ME09011	148	112	0,42	22
110	ME11011	157	134	0,69	14
125	ME12511	166	152	0,89	18
140	ME14011	176	168	1,11	14
160	ME16011	180	195	1,58	12
180	ME18011	186	213	1,86	8
200	ME20011	189	241	2,39	6
225	ME22511	221	271	3,61	4
250	ME25011	224	295	3,98	2
280	ME28011	247	336	5,40	2
315	ME31511	258	379	7,58	2
355	ME35511	296	425	9,97	2
400	ME40011	303	476	14,17	1
450	ME45011	320	537	18,45	1
500	ME50011	378	600	27,09	1
560	ME56011	388	690	36,16	1
630	ME63011	396	750	46,20	1



## ELECTROFUSION COUPLER

SDR 7,4



water  
25 bar



gas  
10 bar



hydrogen  
10 bar



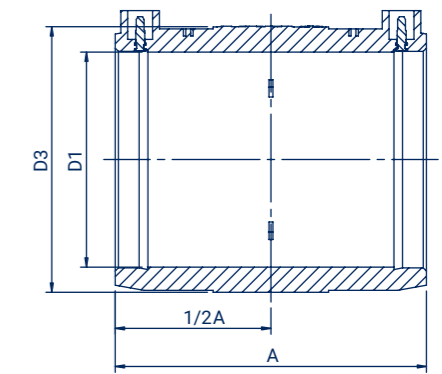
PE 100-RC  
material



10 MPa



removable  
center stop



Size D1 (mm)	Code	A (mm)	D3 (mm)	Weight (kg)	Packing
63	ME06374	134	95	0,49	30
75	ME07574	148	110	0,70	20
90	ME09074	155	132	0,56	17
110	ME11074	166	143	1,00	8
160	ME16074	180	208	2,31	8
225	ME22574	220	291	5,34	2



## ELECTROFUSION COUPLER

SDR 17



water  
10 bar



gas  
5 bar



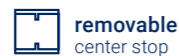
hydrogen  
5 bar



PE 100-RC  
material



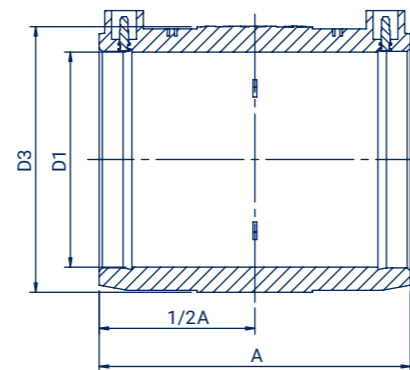
MRS 10 MPa



removable  
center stop



315 - 630  
no center stop



Size D1 (mm)	Code	A (mm)	D3 (mm)	Weight (kg)	Packing
90	ME09017	148	112	0,42	22
110	ME11017	157	134	0,70	14
125	ME12517	167	152	0,90	18
140	ME14017	176	168	1,11	14
160	ME16017	180	195	1,58	12
180	ME18017	186	213	1,71	8
200	ME20017	189	229	1,58	6
225	ME22517	221	271	3,59	4
250	ME25017	224	295	4,33	2
280	ME28017	247	336	5,48	2
315	ME31517	255	352	4,88	2
355	ME35517	296	412	7,99	2
400	ME40017	303	462	9,86	1
450	ME45017	320	512	13,20	1
500	ME50017	377	575	20,05	1
560	ME56017	390	630	22,34	1
630	ME63017	396	714	27,70	1



## ELECTROFUSION REDUCER

SDR 11



water  
16 bar



gas  
10 bar



hydrogen  
10 bar



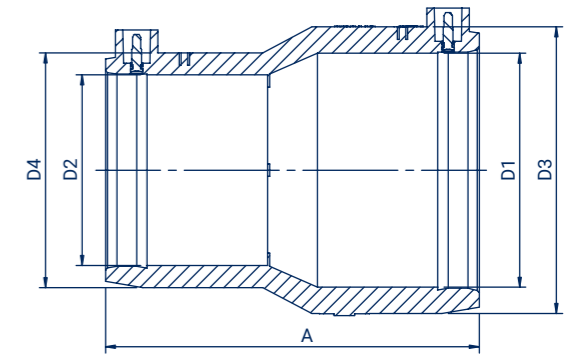
PE 100-RC  
material



MRS 10 MPa



center  
stop

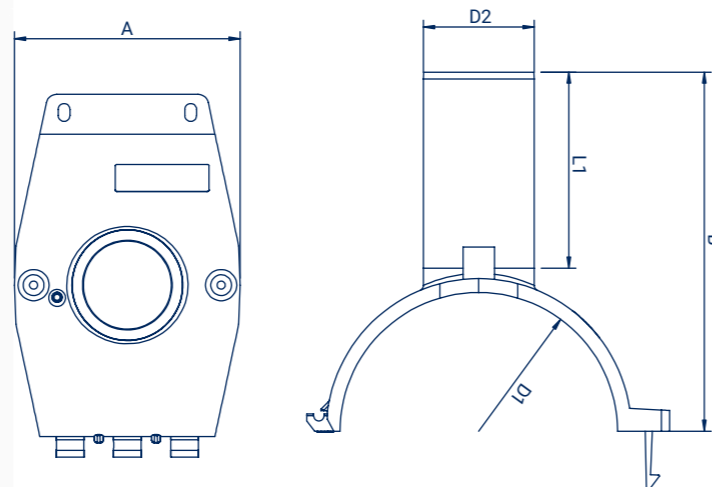


Size D1/D2 (mm)	Code	A (mm)	D3 (mm)	D4 (mm)	Weight (kg)	Packing
25/20	RE02502011	84	35	35	0,05	200
32/20	RE03202011	98	43	35,5	0,06	180
32/25	RE03202511	98	43	35,5	0,05	180
40/25	RE04002511	109	53	35	0,08	130
40/32	RE04003211	92	52	42	0,07	150
50/25	RE05002511	117	66	36,5	0,13	100
50/32	RE05003211	117	65	43	0,11	80
50/40	RE05004011	112	65	53	0,14	90
63/25	RE06302511	142	82	37	0,21	50
63/32	RE06303211	127	82	47	0,20	50
63/40	RE06304011	132	80	53	0,21	50
63/50	RE06305011	122	82	66	0,21	50
75/50	RE07505011	143	93	65	0,28	32
75/63	RE07506311	142	95	80	0,38	30
90/50	RE09005011	171	115	68	0,48	20
90/63	RE09006311	169	115	82	0,49	20
90/75	RE09007511	161	112	95	0,45	20
110/63	RE11006311	180	135	82	0,61	12
110/75	RE11007511	163	140	100	0,82	12
110/90	RE11009011	175	135	111	0,68	12
125/63	RE12506311	198	151	83	0,77	20
125/90	RE12509011	181	151	112	0,83	20
125/110	RE12511011	181	151	136	0,88	20
160/90	RE16009011	231	195	133	1,97	12
160/110	RE16011011	231	195	136	1,69	12
160/125	RE16012511	201	196	153	1,57	12
180/125	RE18012511	208	218	153	1,87	8
200/125	RE20012511	227	238	152	2,03	5
200/160	RE20016011	226	239	196	2,35	4
200/180	RE20018011	225	238	213	2,39	4
225/160	RE22516011	260	266	196	3,38	4
225/180	RE22518011	251	266	214	3,15	3
225/200	RE22520011	250	266	239	3,41	3



# BRANCH SADDLE

SDR 11

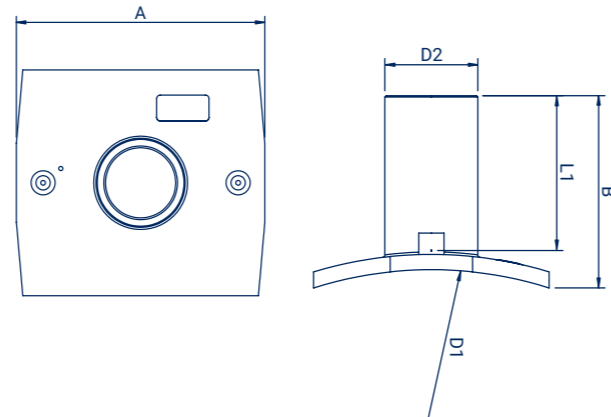
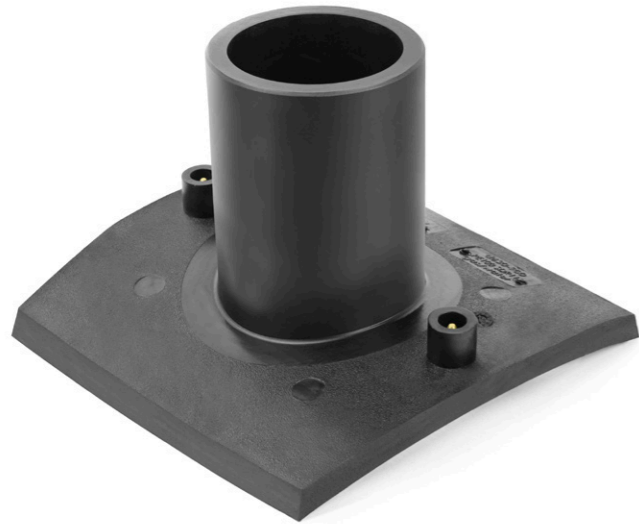
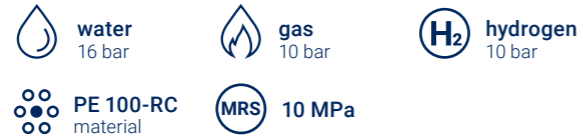


Size D1/D2 (mm)	Code	A (mm)	B (mm)	L1 (mm)	Weight (kg)	Assembly	Packing
63/20	OE06302011	126	109	67	0,22	PE detail	30
63/25	OE06302511	127	110	70	0,23	PE detail	30
63/32	OE06303211	127	137	97	0,25	PE detail	30
63/40	OE06304011	127	136	96	0,25	PE detail	30
63/50	OE06305011	127	136	95	0,27	PE detail	20
63/63	OE06306311	127	136	97	0,33	PE detail	20
75/20	OE07502011	126	109	70	0,22	PE detail	30
75/25	OE07502511	127	132	86	0,23	PE detail	20
75/32	OE07503211	125	131	84	0,23	PE detail	20
75/40	OE07504011	127	136	98	0,28	PE detail	20
75/50	OE07505011	127	136	97	0,30	PE detail	20
75/63	OE07506311	127	159	114	0,34	PE detail	16
90/25	OE09002511	127	137	84	0,25	PE detail	40
90/32	OE09003211	127	138	85	0,24	PE detail	40
90/63	OE09006311	128	166	113	0,36	PE detail	30
110/25	OE11002511	128	137	43	0,29	PE detail	24
110/32	OE11003211	127	140	84	0,30	PE detail	30
110/63	OE11006311	128	175	113	0,40	PE detail	24
125/25	OE12502511	128	153,5	84	0,33	PE detail	24
125/32	OE12503211	128	151	85	0,33	PE detail	24
125/40	OE12504011	128	152	75	0,55	PE detail	24
125/63	OE12506311	128	182	113	0,43	PE detail	20
140/32	OE14003211	128	148	84	0,34	PE detail	20
140/63	OE14006311	128	175	114	0,44	PE detail	18
160/25	OE16002511	128	169	84	0,41	PE detail	18
160/32	OE16003211	128	169	85	0,42	PE detail	18
160/63	OE16006311	128,3	198,3	114	0,52	PE detail	15
160/75	OE16007511	190	195	107	0,99	PE detail	12
160/90	OE16009011	190	191	107	1,11	PE detail	12
160/110	OE16011011	190	195	107	1,30	PE detail	10

Size D1/D2 (mm)	Code	A (mm)	B (mm)	L1 (mm)	Weight (kg)	Assembly	Packing
180/25	OE18002511	128	168	85	0,44	PE detail	15
180/32	OE18003211	128	165	85	0,44	PE detail	13
180/40	OE18004011	128	170	75	0,95	PE detail	25
180/63	OE18006311	128	195	114	0,54	PE detail	12
180/75	OE18007511	190	192	107	0,78	PE detail	10
180/90	OE18009011	190	192	107	1,13	PE detail	12
180/110	OE18011011	190	194	108	1,32	PE detail	10
200/25	OE20002511	169	155	97	0,74	Belt	20
200/32	OE20003211	168	156	97	0,74	Belt	20
200/40	OE20004011	170	158	98	0,78	Belt	20
200/50	OE20005011	170	158	97	0,78	Belt	20
200/63	OE20006311	169	155	96	0,82	Belt	20
200/75	OE20007511	190	193	97	1,04	Belt	16
200/90	OE20009011	190	191	107	1,10	Belt	12
200/110	OE20011011	190	195	107	1,26	Belt	12
225/25	OE22502511	169	155	97	0,73	Belt	20
225/32	OE22503211	170	159	98	0,77	Belt	20
225/40	OE22504011	170	159	98	0,76	Belt	20
225/50	OE22505011	169	156	96	0,78	Belt	20
225/63	OE22506311	169	156	96	0,83	Belt	20
225/75	OE22507511	210	164	110	1,02	Belt	12
225/90	OE22509011	209	175	110	1,15	Belt	12
225/110	OE22511011	210	174	110	1,29	Belt	12
250/25	OE25002511	169	156	99	0,81	Belt	20
250/32	OE25003211	170	154	99	0,79	Belt	20
250/40	OE25004011	169	158	99	0,84	Belt	20
250/50	OE25005011	169	159	98	0,81	Belt	20
250/63	OE25006311	169	155	96	0,90	Belt	20
250/75	OE25007511	209	167	113	1,10	Belt	12
250/90	OE25009011	209	165	111	1,16	Belt	12
250/110	OE25011011	209	166	111	1,28	Belt	12
280/25	OE28002511	169	157	98	0,77	Belt	20
280/32	OE28003211	169	157	98	0,80	Belt	20
280/50	OE28005011	169	158	99	0,84	Belt	20
280/63	OE28006311	169	157	98	0,88	Belt	20
280/75	OE28007511	209	167	114	1,10	Belt	12
280/90	OE28009011	209	165	111	1,16	Belt	12
280/110	OE28011011	210	167	110	1,31	Belt	12
315/25	OE31502511	170	159	99	0,84	Belt	20
315/32	OE31503211	168	153	96	0,81	Belt	20
315/40	OE31504011	169	155	98	0,83	Belt	20
315/50	OE31505011	170	159	99	0,88	Belt	20
315/63	OE31506311	170	157	98	0,92	Belt	20
315/75	OE31507511	209	162	113	1,12	Belt	12
315/90	OE31509011	209	163	110	1,14	Belt	12
315/110	OE31511011	209	166	111	1,29	Belt	12



## BRANCH SADDLE UNIVERSAL SDR 11

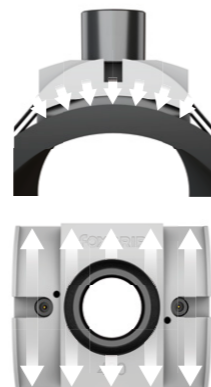


Size D1/D2 (mm)	Code	A (mm)	B (mm)	L1 (mm)	Weight (kg)	Packing
355-560/63	OE35556006311	210	165	112	0,60	20
355-560/75	OE35556007511	210	165	112	0,86	20
355-560/90	OE35556009011	210	165	112	0,88	12
355-560/110	OE35556011011	210	165	112	0,81	16
630-900/63	OE63090006311	209	155	110	0,59	20
630-900/75	OE63090007511	209	155	110	0,69	16
630-900/90	OE63090009011	209	155	110	0,70	16
630-900/110	OE63090011011	209	155	110	0,87	16

## FOXGRIP CLAMPING TOOL



Pipe diameter (mm)	Code
355	FSGRIP355110
400	FSGRIP400110
450	FSGRIP450110
500	FSGRIP500110
560	FSGRIP560110
630	FSGRIP630110
710	FSGRIP710110
800	FSGRIP800110
900	FSGRIP900110

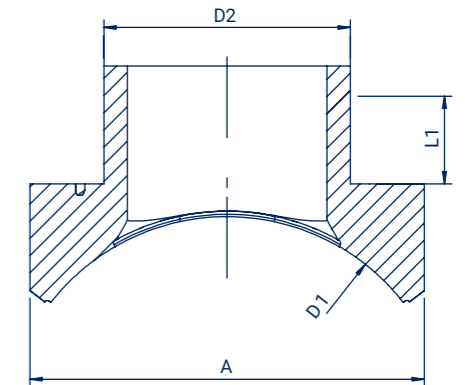
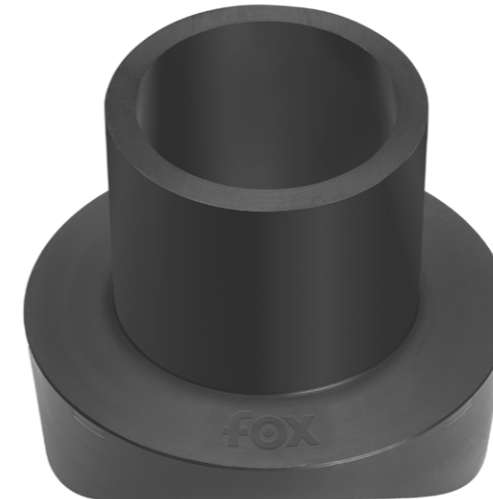


**PERFECT FITTING**  
of the saddle to the  
pipe curvature

**EVEN PRESSURE**  
around the entire  
circumference of the saddle



## BRANCH SADDLE VLS TYPE SDR 11



Size D1/D2 (mm)	Code	A (mm)	L1 (mm)	Weight (kg)	Packing
315/225	OE31522511	370	200	6,46	1
355/225	OE35522511	370	200	6,46	1
400/225	OE40022511	370	200	7,48	1
450/225	OE45022511	370	200	6,46	1
500/225	OE50022511	370	200	6,07	1
560/225	OE56022511	370	200	6,46	1
630/225	OE63022511	370	200	7,25	1
710/225	OE71022511	370	200	6,65	1
800/225	OE80022511	374	200	7,52	1
900/225	OE90022511	374	200	7,52	1
1000/225	OE91022511	374	200	7,52	1

More sizes available on request

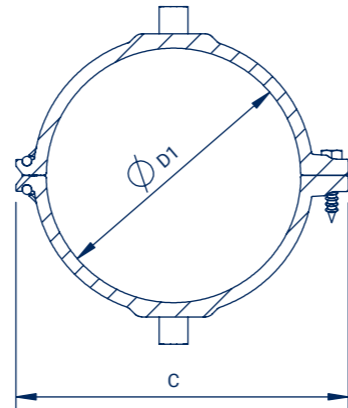
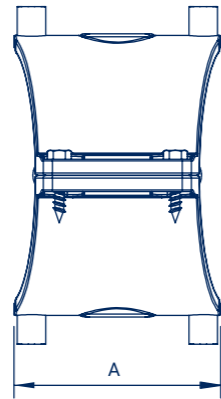
## FOXGRIP<sup>L</sup> CLAMPING TOOL

Code FSGRIP<sup>L</sup>





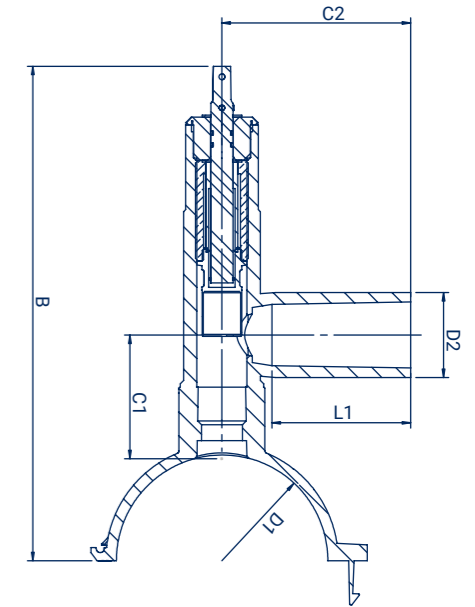
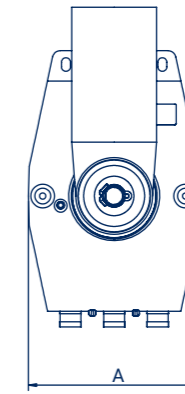
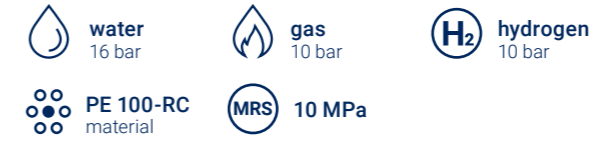
## REPAIRING CLAMP WITH BILATERAL HEATING ZONE SDR 11



Size D1 (mm)	Code	A (mm)	C (mm)	Weight (kg)	Packing
63	OND06311	115	109	0,33	45
75	OND07511	127	119	0,38	30
90	OND09011	127	131	0,39	20
110	OND11011	128	152	0,42	18
125	OND12511	127	169	0,46	36
140	OND14011	127	180	0,54	20
160	OND16011	128	202	0,59	18
180	OND18011	130	239	0,97	12
200	OND20011	169	239	1,36	10
225	OND22511	169	239	1,38	10
250	OND25011	169	265	1,47	10
280	OND28011	169	267	1,35	10
315	OND31511	169	290	1,46	10

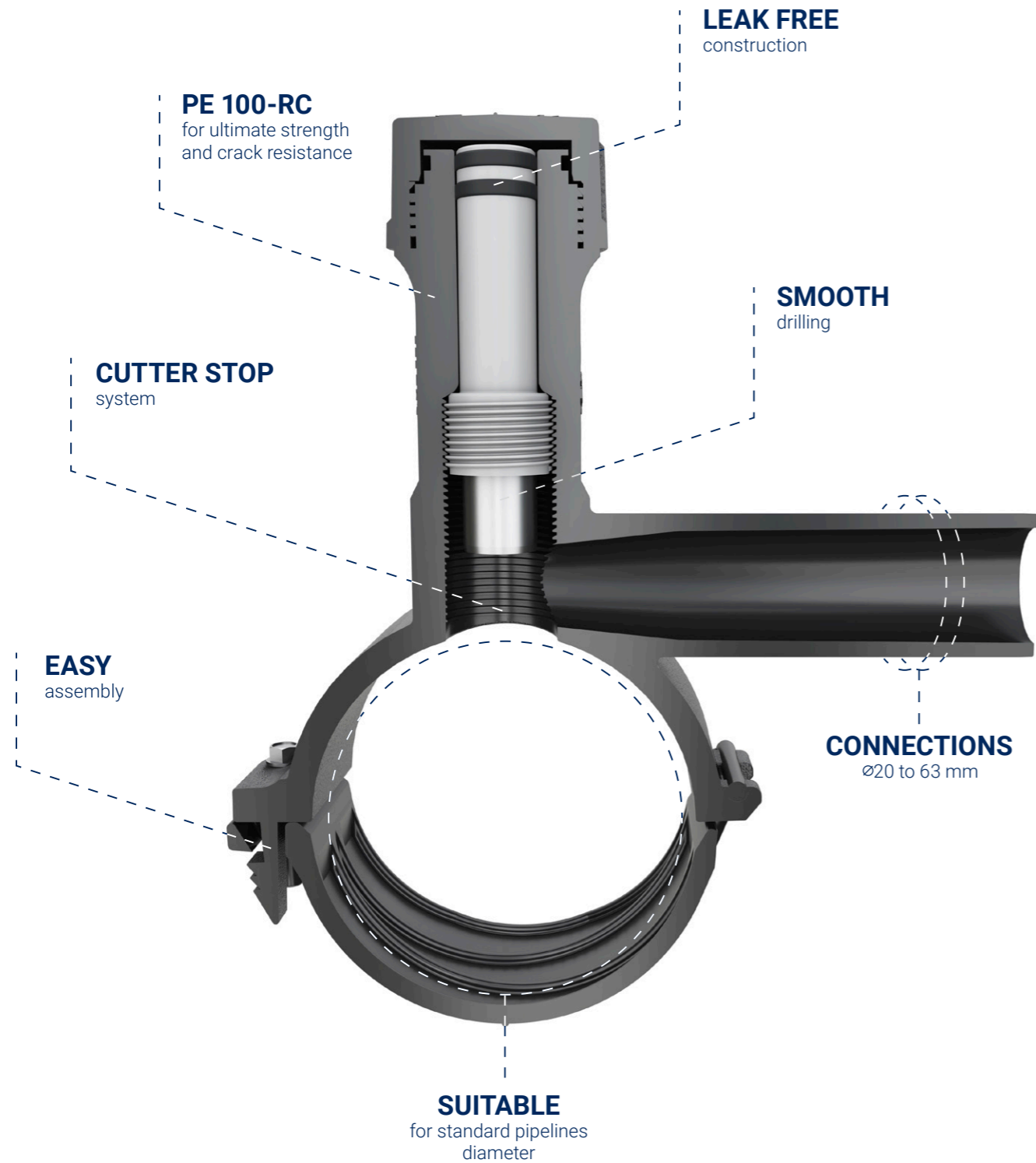


## TAPPING VALVE SDR 11



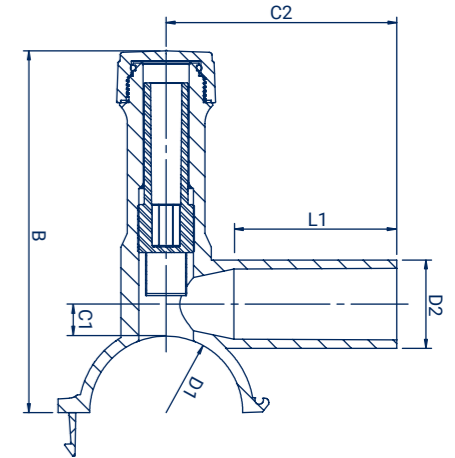
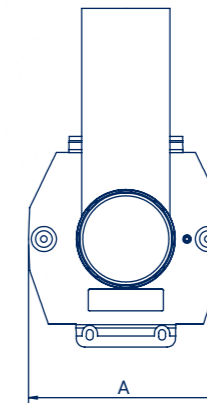
Size D1/D2 (mm)	Code	A (mm)	B (mm)	C2 (mm)	L1 (mm)	C1 (mm)	Weight (kg)	Assembly	Packing
63/32	ZNF06303211	126	320	140	86	87	1,52	PE detail	12
63/63	ZNF06306311	126	320	140	99	87	1,65	PE detail	12
75/32	ZNF07503211	126	320	140	86	87	1,57	PE detail	12
75/63	ZNF07506311	126	320	140	99	87	1,70	PE detail	12
90/32	ZNF09003211	128	320	140	86	87	1,68	PE detail	12
90/63	ZNF09006311	128	335	140	99	87	1,81	PE detail	12
110/32	ZNF11003211	126	346	140	86	87	1,56	PE detail	15
110/63	ZNF11006311	126	346	140	100	87	1,95	PE detail	10
125/32	ZNF12503211	126	346	140	86	88	1,83	PE detail	8
125/63	ZNF12506311	126	346	140	99	89	1,87	PE detail	8
140/32	ZNF14003211	127	341	140	86	87	1,88	PE detail	10
140/63	ZNF14006311	127	341	140	99	87	1,90	PE detail	10
160/32	ZNF16003211	128	380	140	86	89	2,20	PE detail	8
160/63	ZNF16006311	128	380	140	99	89	1,80	PE detail	10
180/32	ZNF18003211	190	365	140	86	83	2,45	PE detail	8
180/63	ZNF18006311	190	365	140	99	85	2,51	PE detail	8
200/32	ZNF20003211	170	340	140	86	87	2,57	Belt	8
200/63	ZNF20006311	170	340	140	99	87	2,62	Belt	8
225/32	ZNF22503211	170	340	140	86	90	2,79	Belt	8
225/63	ZNF22506311	170	340	140	99	90	2,13	Belt	8
250/32	ZNF25003211	170	340	140	86	87	2,84	Belt	8
250/63	ZNF25006311	170	340	140	99	87	2,89	Belt	8

SEE ALSO: Valve stem wrench - page 48-50



## TAPPING TEE SDR 11

- water 16 bar
- gas 10 bar
- hydrogen 10 bar
- PE 100-RC material
- MRS 10 MPa



Size D1/D2 (mm)	Code	A (mm)	B (mm)	C2 (mm)	L1 (mm)	C1 (mm)	Weight (kg)	Assembly	Hex key	Packing
40/20	TS04002011	127	167	130	103	15	0,38	PE detail	12	20
40/25	TS04002511	127	167	133	103	15	0,39	PE detail	12	18
40/32	TS04003211	127	167	147	120	15	0,40	PE detail	12	18
50/20	TS05002011	127	160	130	104	15	0,40	PE detail	12	18
50/25	TS05002511	127	162	132	104	12	0,40	PE detail	12	15
50/32	TS05003211	127	162	147	118	12	0,42	PE detail	12	18
50/40	TS05004011	127	161	146	115	12	0,44	PE detail	12	18
63/20	TS06302011	128	170	94	68	15	0,41	PE detail	12	18
63/25	TS06302511	128	170	95	68	15	0,41	PE detail	12	18
63/32	TS06303211	128	189	149	107	15	0,41	PE detail	12	18
63/40	TS06304011	128	170	105	73	15	0,44	PE detail	12	18
63/50	TS06305011	138	231	129	98	23	0,71	PE detail	17	10
63/63	TS06306311	138	231	151	118	23	0,77	PE detail	17	10
75/20	TS07502011	128	172,5	130	104	15	0,45	PE detail	12	15
75/25	TS07502511	128	172,5	131	101	15	0,45	PE detail	12	15
75/32	TS07503211	128	172,5	145	113	15	0,46	PE detail	12	14
75/40	TS07504011	128	172,5	145	109	15	0,49	PE detail	12	12
75/50	TS07505011	127	227	138	108	88	0,72	PE detail	17	12
75/63	TS07506311	127	226	136	98	90	0,98	PE detail	17	10
90/20	TS09002011	128	171	132	102	15	0,48	PE detail	12	20
90/25	TS09002511	128	179	130	98	15	0,48	PE detail	12	24
90/32	TS09003211	128	175	145	109	15	0,49	PE detail	12	25
90/40	TS09004011	128	175	145	107	15	0,51	PE detail	12	20
90/50	TS09005011	139	244	129	97	23	0,75	PE detail	17	15
90/63	TS09006311	139	244	157	118	23	0,82	PE detail	17	15
110/20	TS11002011	128	189	130	99	15	0,52	PE detail	12	20
110/25	TS11002511	128	189	145	96	16	0,54	PE detail	12	20
110/32	TS11003211	128	189	149	106	16	0,54	PE detail	12	20
110/40	TS11004011	128	189	145	102	16	0,56	PE detail	12	20
110/50	TS11005011	139	253	134	97	23	0,80	PE detail	17	15
110/63	TS11006311	139	253	162	118	23	0,88	PE detail	17	15



## EQUAL EF TEE SDR 11



water  
16 bar



gas  
10 bar



hydrogen  
10 bar



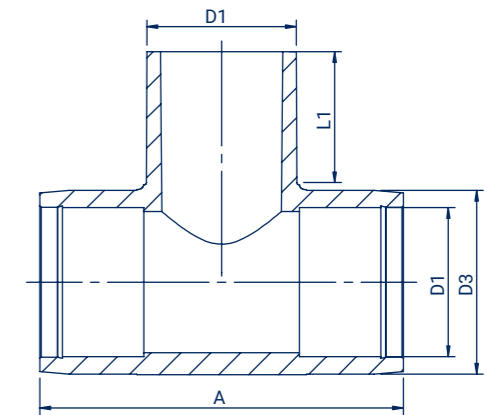
PE 100-RC  
material



MRS 10 MPa



center  
stop



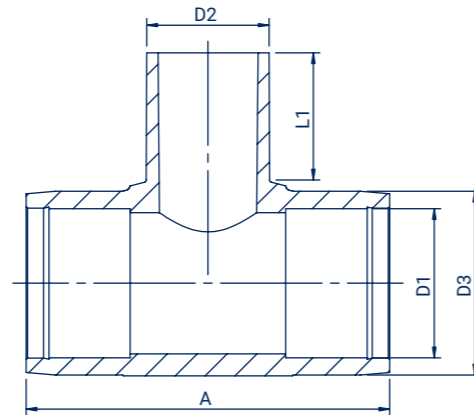
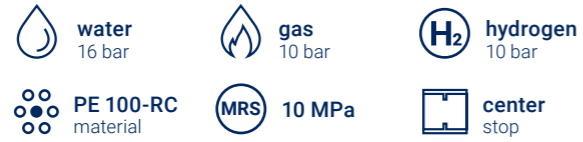
Size D1/D2 (mm)	Code	A (mm)	B (mm)	C2 (mm)	L1 (mm)	C1 (mm)	Weight (kg)	Assembly	Hex key	Packing
125/20	TS12502011	128	195	131	98	15	0,55	PE detail	12	20
125/25	TS12502511	128	195	131	93	15	0,55	PE detail	12	20
125/32	TS12503211	128	195	145	103	15	0,50	PE detail	12	15
125/40	TS12504011	128	195	148	99	15	0,58	PE detail	12	15
125/50	TS12505011	139	263	136	97	23	0,83	PE detail	17	12
125/63	TS12506311	139	263	163	116	23	0,91	PE detail	17	12
140/20	TS14002011	127	245	138	78	88	0,72	PE detail	17	14
140/25	TS14002511	127	245	138	85	88	0,73	PE detail	17	14
140/32	TS14003211	127	245	138	85	88	0,74	PE detail	17	12
140/40	TS14004011	127	245	138	85	88	1,00	PE detail	17	15
140/50	TS14005011	127	245	137	106	88	1,03	PE detail	17	15
140/63	TS14006311	127	245	137	98	88	0,82	PE detail	17	12
160/20	TS16002011	128	272	138	78	89	0,82	PE detail	17	12
160/25	TS16002511	139	275	120	88	23	0,87	PE detail	17	12
160/32	TS16003211	139	275	120	88	23	0,84	PE detail	17	12
160/40	TS16004011	139	275	129	97	23	0,83	PE detail	17	12
160/50	TS16005011	139	275	139	96	23	0,87	PE detail	17	10
160/63	TS16006311	139	275	167	114	23	1,00	PE detail	17	10
180/20	TS18002011	190	264	138	85	82	1,33	PE detail	17	8
180/25	TS18002511	190	267	138	85	82	0,83	PE detail	17	8
180/32	TS18003211	189	265	138	85	82	0,85	PE detail	17	8
180/40	TS18004011	189	261	138	107	82	0,84	PE detail	17	8
180/50	TS18005011	189	265	137	107	82	1,61	PE detail	17	8
180/63	TS18006311	189	265	136	98	82	0,93	PE detail	17	8
200/20	TS20002011	168	247	138	85	88	1,23	Belt	17	10
200/25	TS20002511	168	247	138	85	88	1,12	Belt	17	10
200/32	TS20003211	168	247	138	85	88	1,14	Belt	17	10
200/40	TS20004011	170	247	138	107	88	1,34	Belt	17	10
200/50	TS20005011	169	245	137	106	88	1,17	Belt	17	10
200/63	TS20006311	170	247	136	98	88	1,45	Belt	17	10
225/20	TS22502011	170	248	139	85	88	1,35	Belt	17	10
225/25	TS22502511	170	248	139	85	88	1,13	Belt	17	10
225/32	TS22503211	170	247	138	85	88	1,35	Belt	17	10
225/40	TS22504011	170	245	140	111	90	1,35	Belt	17	10
225/50	TS22505011	169	246	137	107	88	1,35	Belt	17	10
225/63	TS22506311	170	244	136	98	88	1,47	Belt	17	10
250/20	TS25002011	169	245	138	85	87	1,38	Belt	17	10
250/25	TS25002511	169	245	138	85	87	1,19	Belt	17	10
250/32	TS25003211	169	245	138	85	87	1,35	Belt	17	10
250/40	TS25004011	169	245	138	106	88	1,20	Belt	17	10
250/50	TS25005011	168	245	137	109	88	1,42	Belt	17	10
250/63	TS25006311	169	245	136	98	88	1,50	Belt	17	10
280/20	TS28002011	169	244	138	84	86	1,33	Belt	17	10
280/25	TS28002511	169	244	138	84	86	1,33	Belt	17	10
280/32	TS28003211	169	244	138	84	86	1,41	Belt	17	10
280/40	TS28004011	169	244	136	98	88	1,42	Belt	17	10
280/50	TS28005011	169	244	136	98	88	1,42	Belt	17	10
280/63	TS28006311	169	244	136	98	88	1,31	Belt	17	10
315/20	TS31502011	170	247	140	86	87	1,37	Belt	17	10
315/25	TS31502511	170	247	140	86	87	1,37	Belt	17	10
315/32	TS31503211	170	247	140	86	87	1,23	Belt	17	10
315/40	TS31504011	169	244	136	98	88	1,42	Belt	17	10
315/50	TS31505011	169	244	136	98	88	1,49	Belt	17	10
315/63	TS31506311	169	244	136	98	88	1,54	Belt	17	10

SEE ALSO: Tapping tee wrench - page 50

Size D1 (mm)	Code	A (mm)	D3 (mm)	L1 (mm)	Weight (kg)	Packing
20	TE02011	107	37	48	0,09	150
25	TE02511	108	37	44	0,08	140
32	TE03211	122	44	56	0,10	90
40	TE04011	124	54	56	0,15	60
50	TE05011	145	66	74	0,26	30
63	TE06311	164	80	77	0,37	20
75	TE07511	225	96	82	0,73	12
90	TE09011	244	112	88	1,01	7
110	TE11011	267	136	96	1,50	10
125	TE12511	285	152	101	2,05	6
160	TE16011	351	193	114	3,86	3
180	TE18011	390	223	112	5,87	3
200	TE20011	422	243	123	7,24	1
225	TE22511	450	273	128	9,83	1



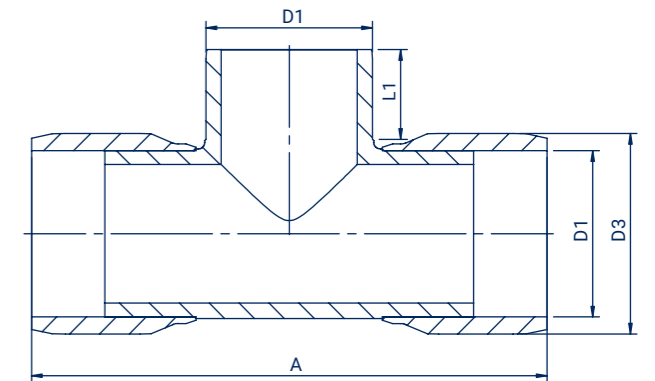
## REDUCED EF TEE SDR 11



Size D1/D2 (mm)	Code	A (mm)	D3 (mm)	L1 (mm)	Weight (kg)	Packing
25/20	TE02502011	108	37	48	0,08	140
32/20	TE03202011	122	44	56	0,11	90
32/25	TE03202511	122	44	56	0,10	90
40/25	TE04002511	124	54	56	0,13	60
40/32	TE04003211	124	54	56	0,14	60
50/25	TE05002511	145	66	58	0,22	40
50/32	TE05003211	145	66	58	0,22	40
50/40	TE05004011	145	66	58	0,23	30
63/32	TE06303211	164	80	77	0,32	25
63/40	TE06304011	164	80	77	0,33	25
63/50	TE06305011	164	80	77	0,34	25
75/63	TE07506311	224	95	78	0,71	12
90/63	TE09006311	244	113	82	1,00	8
90/75	TE09007511	244	113	82	1,00	8
110/63	TE11006311	267	137	86	1,53	10
110/75	TE11007511	266	137	86	1,50	10
110/90	TE11009011	265	137	88	1,50	10
125/63	TE12506311	285	151	102	1,70	8
125/75	TE12507511	285	152	104	1,80	6
125/90	TE12509011	285	152	102	1,80	8
125/110	TE12511011	284	152	101	1,90	6
160/63	TE16006311	348	193	114	3,10	4
160/75	TE16007511	350	194	116	3,30	4
160/90	TE16009011	349	193	115	3,20	4
160/110	TE16011011	349	193	113	3,57	4
160/125	TE16012511	351	194	114	3,60	4
180/125	TE18012511	389	223	105	5,38	3
200/110	TE20011011	422	243	85	6,14	1
225/125	TE22512511	450	273,7	90,5	8,51	1



## EQUAL EF TEE BHZ SDR 11



Size D1 (mm)	Code	A (mm)	D3 (mm)	L1 (mm)	Weight (kg)	Packing
250	TED25011	790	299	135	22,00	1
280	TED28011	857	336	146	42,30	1
315	TED31511	923	379	153	42,30	1
355	TED35511	1 125	425	167	57,00	1
400	TED40011	1 217	476	198	72,80	1
450	TED45011	1 274	537	198	116,00	1
500	TED50011	1 428	600	218	154,00	1



## REDUCED EF TEE BHZ

SDR 11



water  
16 bar



gas  
10 bar



hydrogen  
10 bar



PE 100-RC  
material



10 MPa



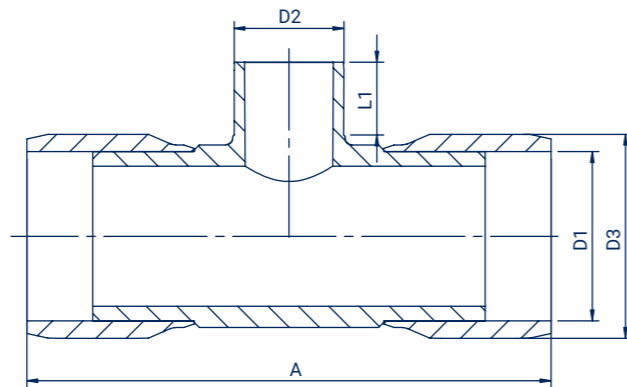
center  
stop



ready  
to use



bilateral heating  
zones



Size D1 (mm)	Code	A (mm)	D3 (mm)	L1 (mm)	Weight (kg)	Packing
250/110	TED25011011	790	299	90	17,00	1
250/160	TED25016011	790	299	107	18,56	1
315/110	TED31511011	922	379	90	32,21	1
315/160	TED31516011	923	379	106	38,06	1
315/250	TED31525011	931	379	150	39,00	1



## ELECTROFUSION END CAP

SDR 11



water  
16 bar



gas  
10 bar



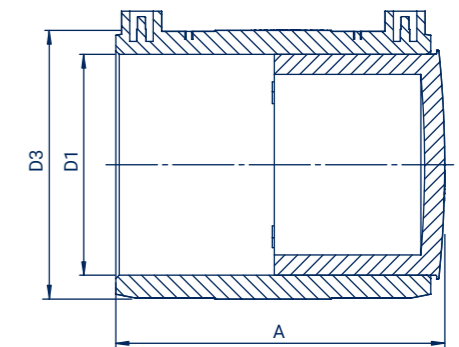
hydrogen  
10 bar



PE 100-RC  
material



10 MPa



Size D1 (mm)	Code	A (mm)	D3 (mm)	Weight (kg)	Packing
20	ZE02011	88	35,5	0,07	200
25	ZE02511	88	35,5	0,06	200
32	ZE03211	88	42,5	0,08	180
40	ZE04011	96	52,5	0,11	150
50	ZE05011	97	64	0,15	90
63	ZE06311	118	79	0,23	50
75	ZE07511	139	97	0,49	30
90	ZE09011	154	112	0,62	18
110	ZE11011	164	134	1,07	12
125	ZE12511	170	152	1,30	18
140	ZE14011	179	168	1,85	14
160	ZE16011	178	195	2,43	6
180	ZE18011	260	213	3,19	4
200	ZE20011	275	238	4,00	3
225	ZE22511	314	266	5,85	2
250	ZE25011	331	295	6,71	2
280	ZE28011	363	336	10,11	2
315	ZE31511	386	379	14,21	1
355	ZE35511	439	425	19,29	2
400	ZE40011	470	476	27,00	1
450	ZE45011	325	537	40,65	1
500	ZE50011	383	600	55,54	1



## ELECTROFUSION ELBOW 90° SDR 11



water  
16 bar



gas  
10 bar



hydrogen  
10 bar



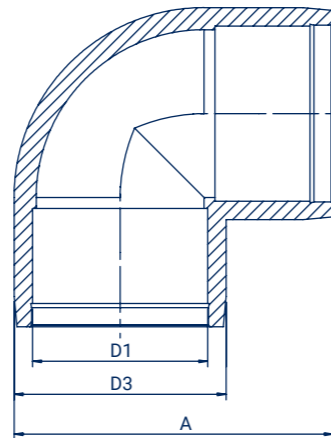
PE 100-RC  
material



MRS 10 MPa



center  
stop



Size D1 (mm)	Code	A (mm)	D3 (mm)	Weight (kg)	Packing
20	KE9002011	79	34	0,05	200
25	KE9002511	80	35	0,05	150
32	KE9003211	83	43	0,07	120
40	KE9004011	94	52	0,11	80
50	KE9005011	105	62	0,17	50
63	KE9006311	126	80	0,28	30
75	KE9007511	159	95	0,50	15
90	KE9009011	178	112	0,77	10
110	KE9011011	200	135	1,18	8
125	KE9012511	226	151	1,55	10
140	KE9014011	245	170	2,01	6
160	KE9016011	275	194	3,01	4



## ELECTROFUSION ELBOW 45° SDR 11



water  
16 bar



gas  
10 bar



hydrogen  
10 bar



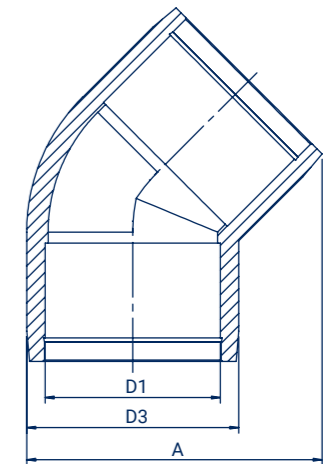
PE 100-RC  
material



MRS 10 MPa



center  
stop



Size D1 (mm)	Code	A (mm)	D3 (mm)	Weight (kg)	Packing
20	KE4502011	65	35	0,06	200
25	KE4502511	65	35	0,05	180
32	KE4503211	72	42	0,07	160
40	KE4504011	84	53	0,10	90
50	KE4505011	97	67	0,18	60
63	KE4506311	114	81	0,23	35
75	KE4507511	140	93	0,47	20
90	KE4509011	160	112	0,64	12
110	KE4511011	185	135	0,94	8
125	KE4512511	208	151	1,22	10
140	KE4514011	225	170	1,61	8
160	KE4516011	253	195	2,33	5



## ELECTROFUSION ELBOW BHZ 90° SDR 11



water  
16 bar



gas  
10 bar



hydrogen  
10 bar



PE 100-RC  
material



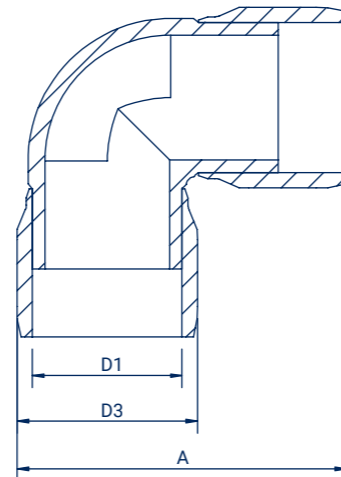
10 MPa



ready  
to use



bilateral heating  
zones



Size D1 (mm)	Code	A (mm)	D3 (mm)	Weight (kg)	Packing
180	KED9018011	412	213	7,00	1
200	KED9020011	448	238	9,20	1
225	KED9022511	496	266	12,71	2
250	KED9025011	540	299	17,80	1
280	KED9028011	570	336	26,40	1
315	KED9031511	645	379	35,00	1
355	KED9035511	893	425	69,80	1
400	KED9040011	1 370	476	102,30	1
450	KED9045011	1 074	537	139,00	1
500	KED9050011	1 199	600	145,00	1



## ELECTROFUSION ELBOW BHZ 45° SDR 11



water  
16 bar



gas  
10 bar



hydrogen  
10 bar



PE 100-RC  
material



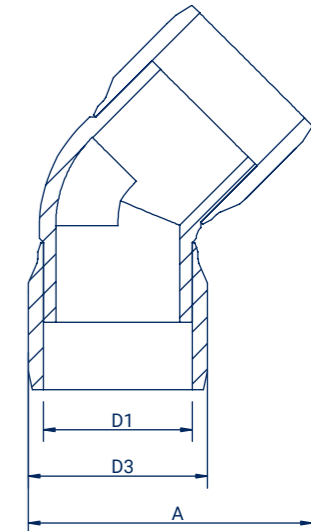
10 MPa



ready  
to use



bilateral heating  
zones

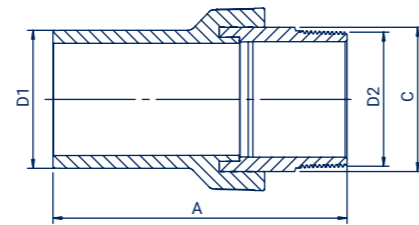


Size D1 (mm)	Code	A (mm)	D3 (mm)	Weight (kg)	Packing
180	KED4518011	355	213	6,70	2
200	KED4520011	383	238	8,79	1
225	KED4522511	430	266	10,80	2
250	KED4525011	480	299	16,00	1
280	KED4528011	500	336	21,94	1
315	KED4531511	551	379	29,95	1
355	KED4535511	912	425	65,00	1
400	KED4540011	989	476	83,30	1
450	KED4545011	1 069	537	119,00	1
500	KED4550011	1 200	600	156,00	1

## PE / BRASS TRANSITION SDR 11

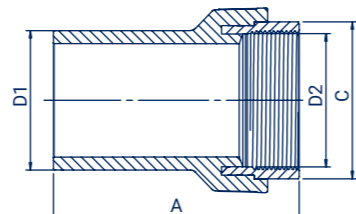


MALE THREAD |



Size D1/D2 (mm x inch)	Code	C (mm)	A (mm)	Weight (kg)	Packing
20 x 1/2"	AGZ020012	22	91	0,08	140
25 x 3/4"	AGZ025034	28	93	0,12	100
32 x 1"	AGZ032001	34	102	0,17	70
40 x 1"	AGZ040001	34	107	0,16	64
40 x 1 1/4"	AGZ040114	44	113	0,28	50
50 x 1 1/2"	AGZ050112	49	123	0,36	36
63 x 2"	AGZ063002	61	139	0,67	12
75 x 2 1/2"	AGZ075212	76	158	0,96	8
90 x 3"	AGZ090003	88	175	1,40	6
110 x 4"	AGZ110004	114	196	2,35	8
125 x 4"	AGZ125004	114	196	2,44	6

FEMALE THREAD |



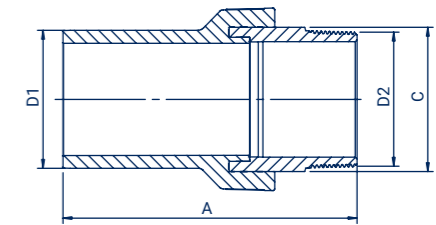
Size D1/D2 (mm x inch)	Code	C (mm)	A (mm)	Weight (kg)	Packing
20 x 1/2"	AGW020012	26	77	0,07	120
25 x 3/4"	AGW025034	32	78	0,09	100
32 x 1"	AGW032001	40	83	0,14	80
40 x 1"	AGW040001	40	88	0,16	64
40 x 1 1/4"	AGW040114	48	96	0,20	49
50 x 1 1/2"	AGW050112	55	103	0,29	36
63 x 2"	AGW063002	67	115	0,41	25
75 x 2 1/2"	AGW075212	83	130	0,65	16
90 x 3"	AGW090003	96	147	1,02	8
110 x 4"	AGW110004	122	160	1,50	8
125 x 4"	AGW125004	122	160	1,59	6

## PE / ECO BRASS TRANSITION SDR 11



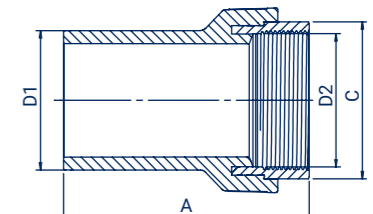
ECO  
friendly

MALE THREAD |



Size D1/D2 (mm x inch)	Code	C (mm)	A (mm)	Weight (kg)	Packing
25 x 3/4"	AGZ025034ECO	28	93	0,12	100
32 x 1"	AGZ032001ECO	34	102	0,17	70
40 x 1"	AGZ040001ECO	34	107	0,16	64
40 x 1 1/4"	AGZ040114ECO	44	113	0,28	50
50 x 1 1/2"	AGZ050112ECO	49	123	0,36	36
63 x 2"	AGZ063002ECO	61	139	0,67	12

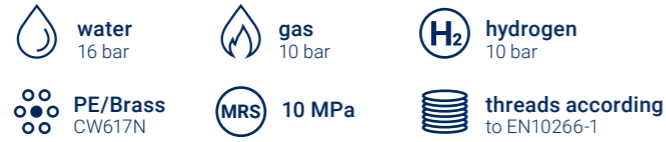
FEMALE THREAD |



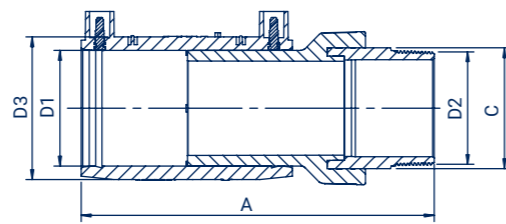
Size D1/D2 (mm x inch)	Code	C (mm)	A (mm)	Weight (kg)	Packing
25 x 3/4"	AGW025034ECO	32	78	0,09	100
32 x 1"	AGW032001ECO	40	83	0,14	80
40 x 1"	AGW040001ECO	40	88	0,16	64
40 x 1 1/4"	AGW040114ECO	48	96	0,20	49
50 x 1 1/2"	AGW050112ECO	55	103	0,29	36
63 x 2"	AGW063002ECO	67	115	0,41	25



## ELECTROFUSION COUPLER WITH BRASS TRANSITION SDR 11

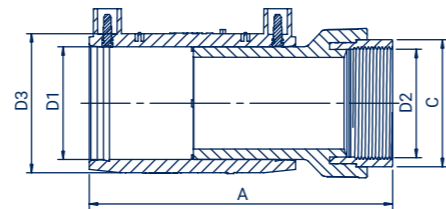


MALE THREAD |



Size D1/D2 (mm x inch)	Code	C (mm)	D3 (mm)	A (mm)	Weight (kg)	Packing
20 x 1/2"	MGZ020012	22	35	134	0,13	54
25 x 3/4"	MGZ025034	28	36	136	0,17	100
32 x 1"	MGZ032001	34	43	145	0,24	100
40 x 1"	MGZ040001	34	53	154	0,36	40
40 x 1 1/4"	MGZ040114	44	53	160	0,35	60
50 x 1 1/2"	MGZ050112	49	64	170	0,47	40
63 x 2"	MGZ063002	61	79	197	0,85	30
75 x 2 1/2"	MGZ075212	76	96	226	1,31	10
90 x 3"	MGZ090003	88	112	250	1,87	10
110 x 4"	MGZ110004	114	134	276	3,05	6
125 x 4"	MGZ125004	114	152	280	3,34	6

FEMALE THREAD |



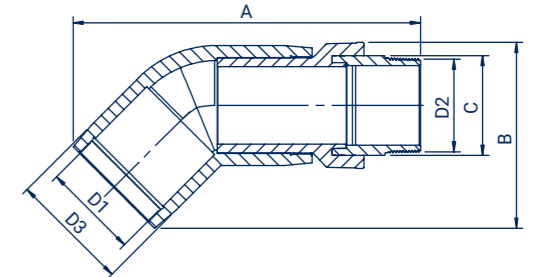
Size D1/D2 (mm x inch)	Code	C (mm)	D3 (mm)	A (mm)	Weight (kg)	Packing
20 x 1/2"	MGW020012	26	35	120	0,13	54
25 x 3/4"	MGW025034	32	36	121	0,14	100
32 x 1"	MGW032001	40	43	126	0,19	100
40 x 1"	MGW040001	40	53	135	0,24	100
40 x 1 1/4"	MGW040114	48	53	143	0,28	60
50 x 1 1/2"	MGW050112	55	64	150	0,39	50
63 x 2"	MGW063002	67	79	173	0,59	30
75 x 2 1/2"	MGW075212	83	96	198	1,00	10
90 x 3"	MGW090003	96	112	222	1,47	10
110 x 4"	MGW110004	122	134	239	2,20	8
125 x 4"	MGW125004	122	152	244	2,49	6



## ELECTROFUSION ELBOW 45° WITH BRASS TRANSITION SDR 11

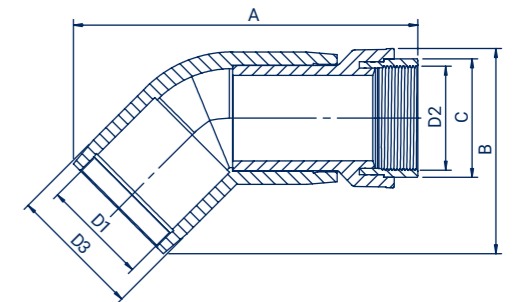


MALE THREAD |



Size D1/D2 (mm x inch)	Code	C (mm)	D3 (mm)	A (mm)	B (mm)	Weight (kg)	Packing
20 x 1/2"	KGZ45020012	22	35	147	67	0,15	36
25 x 3/4"	KGZ45025034	28	37	150	71	0,14	30
32 x 1"	KGZ45032001	34	44	163	78	0,25	20
40 x 1"	KGZ45040001	34	56	177	86	0,33	12
40 x 1 1/4"	KGZ45040114	44	56	184	88	0,42	12
50 x 1 1/2"	KGZ45050112	49	67	201	97	0,54	10
63 x 2"	KGZ45063002	61	81	231	115	0,94	10
75 x 2 1/2"	KGZ45075212	76	93	272	142	1,37	8
90 x 3"	KGZ45090003	88	112	306	165	2,03	6
110 x 4"	KGZ45110004	114	135	344	189	3,29	5
125 x 4"	KGZ45125004	114	151	263	210	3,64	4

FEMALE THREAD |



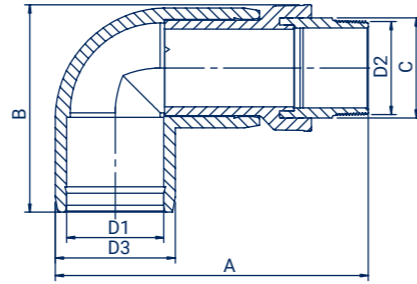
Size D1/D2 (mm x inch)	Code	C (mm)	D3 (mm)	A (mm)	B (mm)	Weight (kg)	Packing
20 x 1/2"	KGW45020012	26	35	133	67	0,14	35
25 x 3/4"	KGW45025034	32	37	135	71	0,15	40
32 x 1"	KGW45032001	40	44	145	78	0,22	25
40 x 1"	KGW45040001	40	56	159	86	0,29	14
40 x 1 1/4"	KGW45040114	48	56	167	89	0,34	14
50 x 1 1/2"	KGW45050112	55	67	181	98	0,46	10
63 x 2"	KGW45063002	67	81	207	116	0,68	15
75 x 2 1/2"	KGW45075212	83	93	245	145	1,06	8
90 x 3"	KGW45090003	96	112	278	165	1,65	8
110 x 4"	KGW45110004	122	135	308	189	2,44	5
125 x 4"	KGW45125004	122	151	327	210	2,79	4



## ELECTROFUSION ELBOW 90° WITH BRASS TRANSITION SDR 11

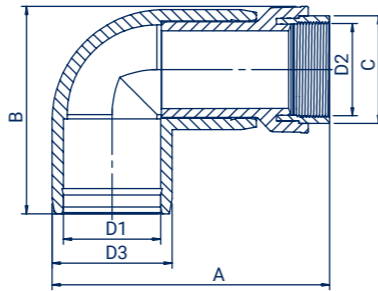


MALE THREAD |



Size D1/D2 (mm x inch)	Code	C (mm)	D3 (mm)	A (mm)	B (mm)	Weight (kg)	Packing
20 x 1/2"	KGZ90020012	22	34	126	81	0,15	36
25 x 3/4"	KGZ90025034	28	35	129	85	0,14	30
32 x 1"	KGZ90032001	34	43	146	88	0,24	20
40 x 1"	KGZ90040001	34	52	160	94	0,30	12
40 x 1 1/4"	KGZ90040114	44	52	166	99	0,39	12
50 x 1 1/2"	KGZ90050112	49	62	186	108	0,51	8
63 x 2"	KGZ90063002	61	80	220	127	0,96	14
75 x 2 1/2"	KGZ90075212	76	95	254	162	1,46	8
90 x 3"	KGZ90090003	88	112	288	180	2,17	6
110 x 4"	KGZ90110004	114	135	332	203	3,45	4
125 x 4"	KGZ90125004	114	151	348	225	3,99	3

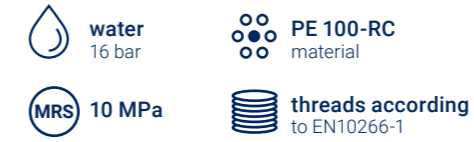
FEMALE THREAD |



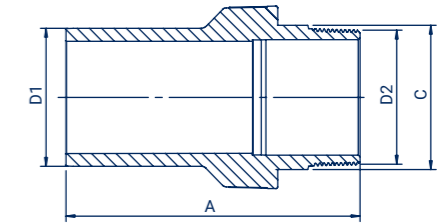
Size D1/D2 (mm x inch)	Code	C (mm)	D3 (mm)	A (mm)	B (mm)	Weight (kg)	Packing
20 x 1/2"	KGW90020012	26	34	114	81	0,14	40
25 x 3/4"	KGW90025034	32	35	116	85	0,15	30
32 x 1"	KGW90032001	40	43	127	88	0,21	25
40 x 1"	KGW90040001	40	52	141	94	0,26	15
40 x 1 1/4"	KGW90040114	48	52	149	99	0,31	14
50 x 1 1/2"	KGW90050112	55	62	166	108	0,43	12
63 x 2"	KGW90063002	67	80	196	127	0,70	14
75 x 2 1/2"	KGW90075212	83	95	226	162	1,15	8
90 x 3"	KGW90090003	96	112	260	180	1,79	8
110 x 4"	KGW90110004	122	135	296	203	2,60	5
125 x 4"	KGW90125004	122	151	312	225	3,14	4



## PE TRANSITION SDR 11

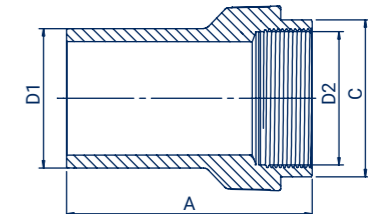


MALE THREAD |



Size D1/D2 (mm x inch)	Code	C (mm)	A (mm)	Weight (kg)	Packing
20 x 1/2"	PGZ020012	22	91	0,03	140
25 x 3/4"	PGZ025034	28	93	0,04	100
32 x 1"	PGZ032001	34	102	0,06	70
40 x 1"	PGZ040001	34	107	0,08	64
40 x 1 1/4"	PGZ040114	44	113	0,10	50
50 x 1 1/2"	PGZ050112	49	123	0,13	36
63 x 2"	PGZ063002	61	139	0,23	12
75 x 2 1/2"	PGZ075212	76	158	0,40	8
90 x 3"	PGZ090003	88	175	0,53	6
110 x 4"	PGZ110004	114	196	0,85	8
125 x 4"	PGZ125004	114	196	0,99	6

FEMALE THREAD |



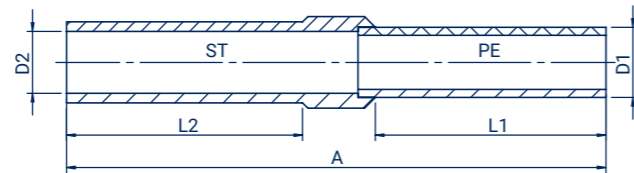
Size D1/D2 (mm x inch)	Code	C (mm)	A (mm)	Weight (kg)	Packing
20 x 1/2"	PGW020012	26	77	0,03	120
25 x 3/4"	PGW025034	32	78	0,04	100
32 x 1"	PGW032001	40	83	0,06	80
40 x 1"	PGW040001	40	88	0,07	64
40 x 1 1/4"	PGW040114	48	96	0,09	49
50 x 1 1/2"	PGW050112	55	103	0,12	36
63 x 2"	PGW063002	67	115	0,19	25
75 x 2 1/2"	PGW075212	83	130	0,39	16
90 x 3"	PGW090003	96	147	0,45	8
110 x 4"	PGW110004	122	160	0,72	8
125 x 4"	PGW125004	122	160	0,86	6



## PE / STEEL TRANSITION



MRS 10 MPa



Size D1/D2 (mm)	Code	A (mm)	L2 (mm)	L1 (mm)	Weight (kg)	Packing
25/20	PS025020	530	300	190	0,95	-
32/25	PS032025	531	300	190	0,99	-
40/32	PS040032	531	300	185	1,17	-
50/40	PS050040	530	300	182	1,24	-
63/50	PS063050	530	300	175	2,52	-
75/65	PS075065	567	300	200	2,68	-
90/80	PS090080	546	300	175	3,49	-
110/100	PS110100	579	300	200	8,61	-
125/100	PS125100	560	300	175	9,48	-
160/150	PS160150	590	300	195	12,10	-
180/150	PS180150	643	300	228	14,38	-
200/200	PS200200	665	300	245	21,21	-
225/200	PS225200	700	300	255	22,53	-
250/200	PS250200	830	400	280	35,70	-
250/250	PS250250	810	400	260	36,86	-
280/250	PS280250	870	400	280	40,40	-
315/250	PS315250	860	400	270	41,50	-
315/300	PS315300	890	400	300	42,21	-
355/300	PS355300	890	400	300	44,10	-

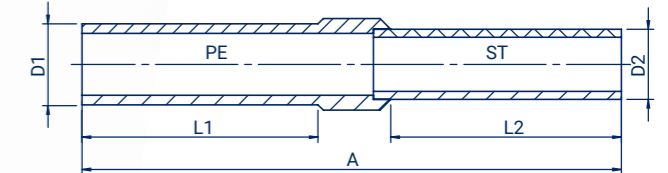


## PE / STEEL TRANSITION INJECTED



PE 100-RC material

MRS 10 MPa

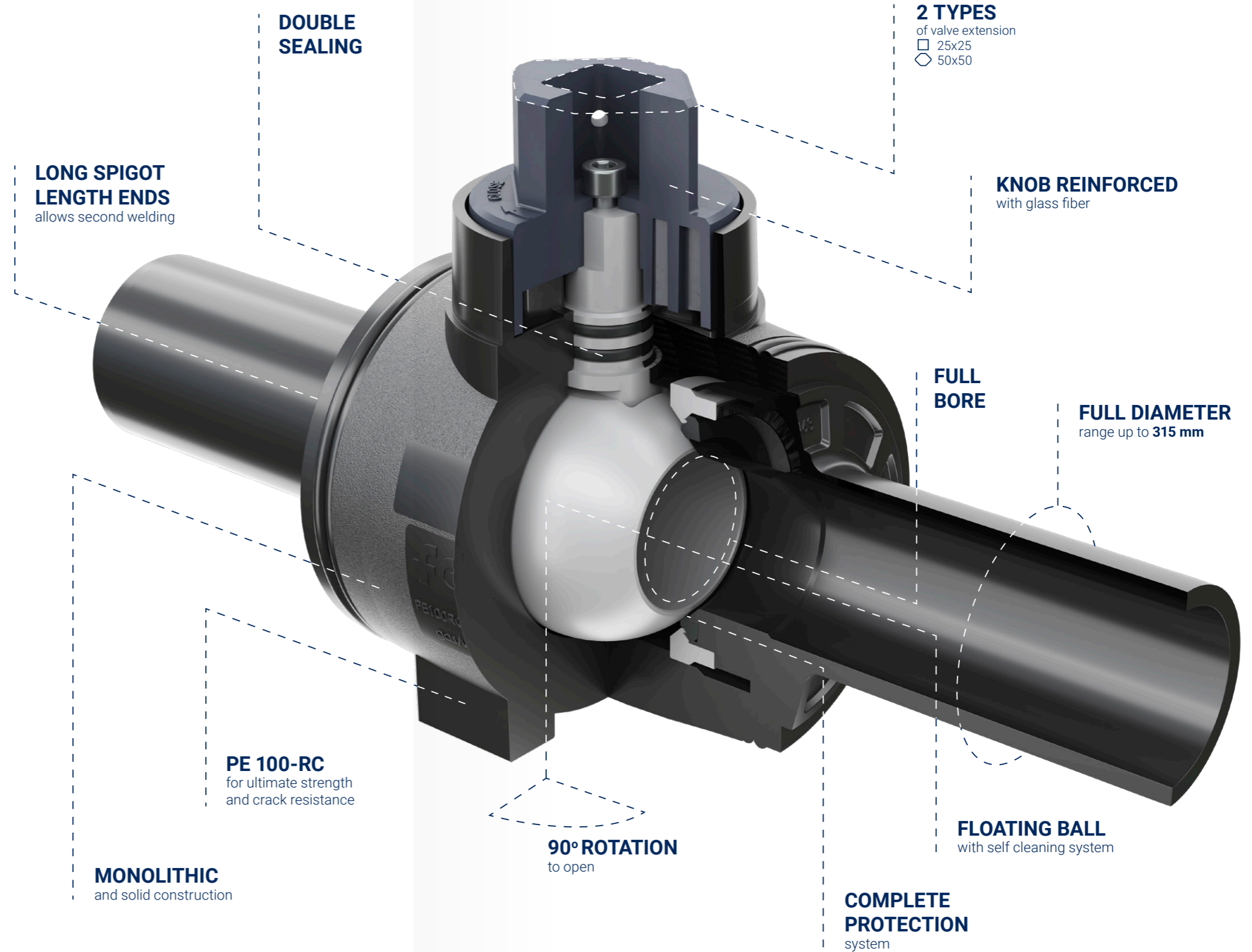


Size D1/D2 (mm)	Code	A (mm)	L2 (mm)	L1 (mm)	Weight (kg)	Packing
25/20	PS025020W	360	207	64	0,44	30
32/25	PS032025W	460	209	85	0,88	30
63/50	PS063050W	580	134	147	2,01	1



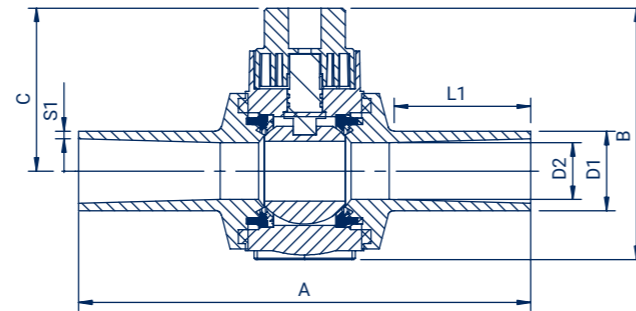
# PE BALL VALVES

Polyethylene ball valves can be used in various industries, in all types of PE pipelines, properly to any type of liquid or gas medium. Produced in a wide range of sizes/dimensions, characterized by high resistance to corrosive and extended life span.





## PE BALL-VALVE SDR 11

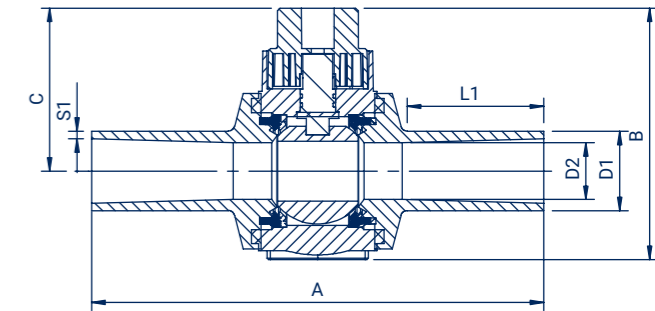


Size D1 (mm)	Code	A (mm)	B (mm)	C (mm)	L1 (mm)	S1 (mm)	Bore D2 (mm)	Weight (kg)	Packing
25	BVS02511	251	134	98	58	3	16	0,58	12
32	BVS03211	251	134	98	60	3	20	0,58	12
40	BVS04011	251	134	98	60	3,7	25	0,61	12
50	BVS05011	364	198	135	95	4,6	39	1,77	6
63	BVS06311	340	198	135	116	5,8	49	1,78	6
75	BVS07511	358	202	135	137	6,8	49	1,96	6
90	BVS09011	496	266	160	151	8,2	71	4,80	2
110	BVS11011	490	266	160	156	10	87	5,00	2
125	BVS12511	486	265	160	156	11,4	93	5,34	2
160	BVR16011	486	265	159	166	14,6	93	6,69	2
160	BVS16011	620	400	221	155	14,6	128	22,77	1
180	BVR18011	470	265	159	156	16,4	93	7,06	1
180	BVS18011	620	400	221	155	16,4	144	22,85	1
200	BVS20011	620	400	221	155	18,2	150	23,73	1
225	BVS22511	620	400	221	155	20,5	150	24,73	1
250	BVR25011	620	400	221	155	22,7	150	26,03	1
280	BVR28011	620	400	221	155	25,4	150	29,80	1
315	BVR31511	620	400	221	155	28,6	150	28,98	1

SEE ALSO: Valve stem wrench - page 48-50



## PE BALL-VALVE IPS SDR 11



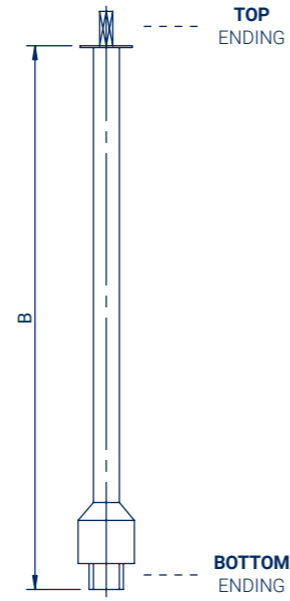
Size D1 (inch)	Code	A (inch)	B (inch)	C (inch)	L1 (inch)	S1 (inch)	Bore D2 (inch)	Weight (kg)	Packing
1	IBVS00111	9,88	5,27	3,85	2,36	0,12	0,79	0,58	12
2	IBVS00211	13,39	7,79	5,31	4,49	0,23	1,81	1,80	5
3	IBVS00311	19,37	10,47	6,26	5,9	0,32	2,8	4,80	2
4	IBVS00411	19,37	10,47	6,26	5,9	0,41	3,62	4,94	2
6	IBVS00611	24,41	15,75	8,7	6,1	0,6	5,35	23,00	1
8	IBVS00811	24,41	15,75	8,7	6,1	0,79	6,06	24,90	1

SEE ALSO: Valve stem wrench - page 48-50



# VALVE EXTENSION

- water
- gas
- hydrogen
- top quality



Code	B (mm)	Top ending	Bottom ending	For product	Weight (kg)
KZN060100S1F	600-1000			ZNF	1,55
KZN120200S1F	1200-2000			ZNF	2,60
KZP060100M1C	600-1000			BVS160-315 BVR250-315	3,74
KZP120200M1C	1200-2000			BVS160-315 BVR250-315	6,15
KZP060100S1A	600-1000			BVS020-125 BVR160-180	1,74
KZP120200S1A	1200-2000			BVS020-125 BVR160-180	2,86



# VALVE WRENCH

- water
- gas
- hydrogen
- top quality



Code	For product	Weight (kg)
KEYBVS	BVS25-125 BVR160-180	0,36

COMPACT SIZE



EASY OPERATION



HIGH DURABILITY



FITS VALVES AVAILABLE ON THE MARKET





# VALVE WRENCHES



water



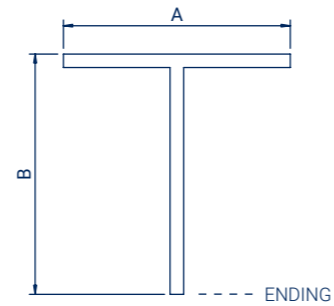
gas









hydrogen



top  
quality



Code	A (mm)	B (mm)	Ending	For product	Weight (kg)
KEYKZPM	585	835		KZP060100M1C KZP120200M1C	2,95
KEYKZPS	600	320		KZN060100S1F KZN120200S1F KZP060100S1A KZP120200S1A	0,50
KEYTS12	300	257		TS	0,72
KEYTS17	300	257		TS	0,95
KEYTSFL17	350	425		TS	0,50
KEYZNF	500	255		ZNF	1,31



# SPIGOT FITTINGS



Spigot fittings are available in a wide range of types and sizes. High-quality products provide a durable, leak-free piping system both in gas and water supply networks, as well as in other industrial installations.

**FOR SPIGOT  
WELDING**

**FOR ELECTROFUSION  
WELDING**

**SUITABLE**

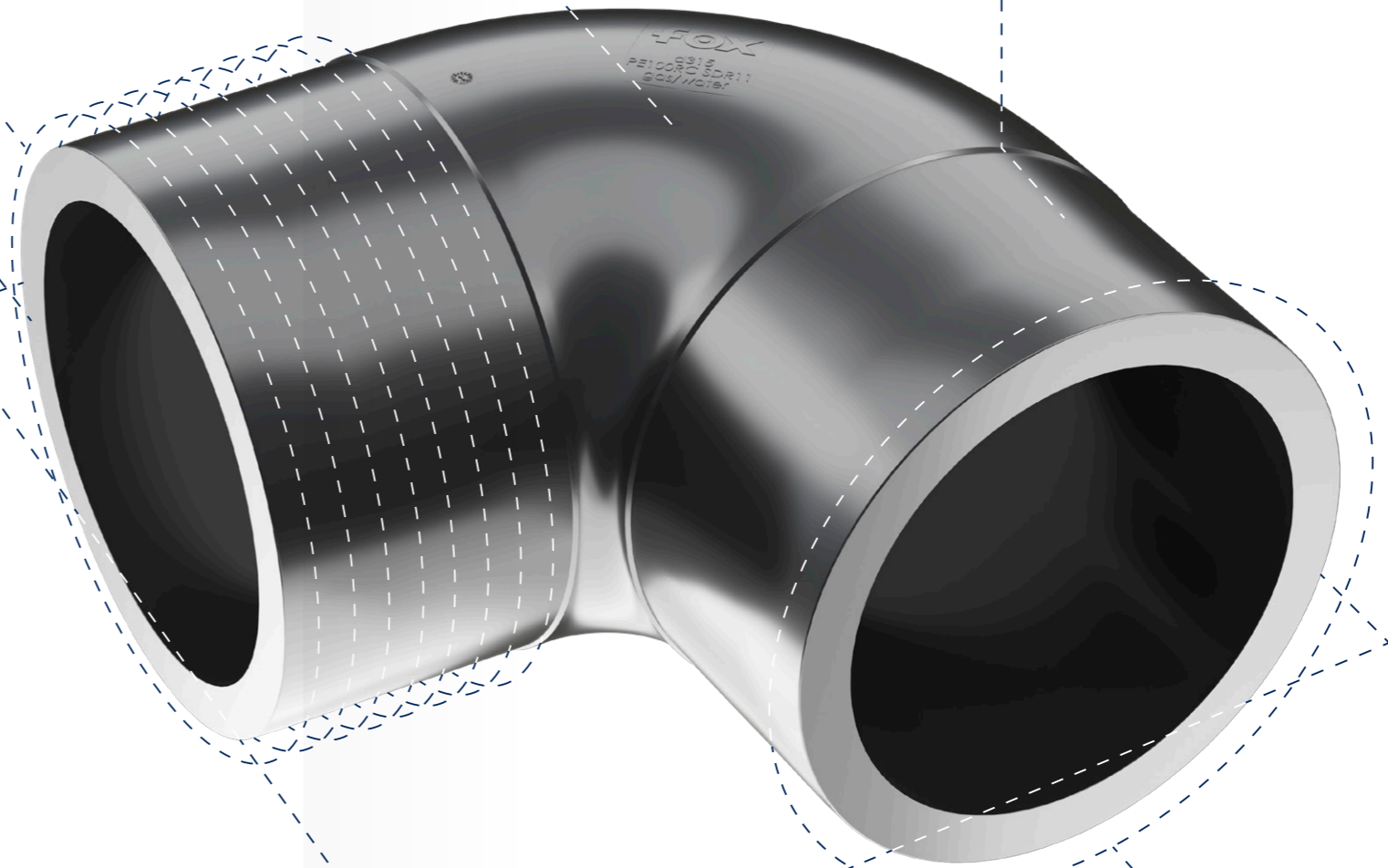
for gas, water, hydrogen,  
compressed air, glycol systems

**MOP**

up to 16 bar

**PE 100-RC**

for ultimate strength  
and crack resistance



**COMPACT  
DESIGN**

**FULL DIAMETER**  
range up to 315 mm



## SPIGOT ELBOW 90° SDR 11



water  
16 bar



gas  
10 bar



hydrogen  
10 bar



PE 100-RC  
material



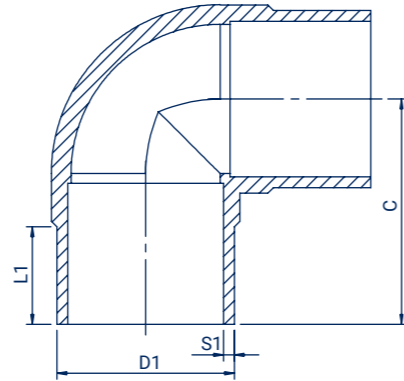
10 MPa



butt  
welding



electrofusion  
welding



Size D1 (mm)	Code	L1 (mm)	C (mm)	S1 (mm)	Weight (kg)	Packing
25	KD9002511	43	69	2,3	0,02	-
32	KD9003211	47	79	3	0,04	150
40	KD9004011	52	93	3,7	0,08	-
50	KD9005011	59	109	4,6	0,14	-
63	KD9006311	67	130	5,8	0,26	-
75	KD9007511	75	150	6,8	0,42	-
90	KD9009011	81	131	8,2	0,53	16
110	KD9011011	95	210	10	1,29	6
125	KD9012511	93	163	11,4	1,32	6
140	KD9014011	120	200	12,7	2,28	5
160	KD9016011	101	190	14,6	2,47	6
180	KD9018011	112	212	16,4	3,59	4
200	KD9020011	121	233	18,2	4,89	2
225	KD9022511	125	251	20,5	6,40	2
250	KD9025011	135	275	22,7	8,85	1
280	KD9028011	146	303	25,4	12,14	1
315	KD9031511	157	335	28,6	16,81	1



## SPIGOT ELBOW 90° SDR 17



water  
10 bar



gas  
5 bar



hydrogen  
5 bar



PE 100-RC  
material



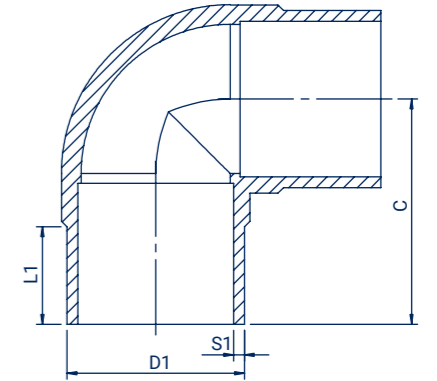
10 MPa



butt  
welding



electrofusion  
welding



Size D1 (mm)	Code	L1 (mm)	C (mm)	S1 (mm)	Weight (kg)	Packing
63	KD9006317	67	130	3,8	0,18	-
75	KD9007517	75	150	4,5	0,30	-
90	KD9009017	80	130	5,4	0,36	16
110	KD9011017	94	209	6,6	0,94	6
125	KD9012517	93	163	7,4	0,89	6
140	KD9014017	95	241	8,3	1,64	-
160	KD9016017	100	189	9,5	1,64	6
180	KD9018017	111	211	10,7	2,35	4
200	KD9020017	121	231	11,9	3,47	2
225	KD9022517	127	251	13,4	4,50	2
250	KD9025017	135	275	14,8	6,02	1
280	KD9028017	146	303	16,6	8,42	1
315	KD9031517	157	335	18,7	11,64	1



## SPIGOT ELBOW 45° SDR 11



water  
16 bar



gas  
10 bar



hydrogen  
10 bar



PE 100-RC  
material



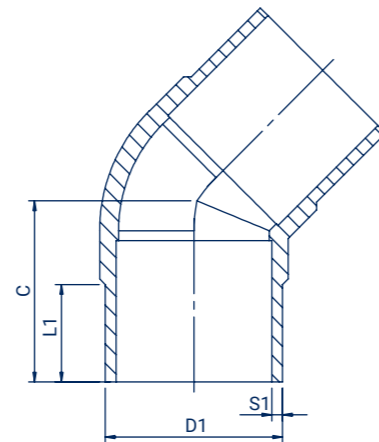
10 MPa



butt  
welding



electrofusion  
welding



Size D1 (mm)	Code	L1 (mm)	C (mm)	S1 (mm)	Weight (kg)	Packing
25	KD4502511	48	42	3	0,02	-
32	KD4503211	57	49	3	0,04	15
40	KD4504011	63	53	3,7	0,06	10
50	KD4505011	67	57	4,6	0,10	10
63	KD4506311	66	88	5,8	0,21	30
75	KD4507511	71	90	6,8	0,29	25
90	KD4509011	83	109	8,2	0,45	16
110	KD4511011	109	139	10	0,94	8
125	KD4512511	93	124	11,4	0,95	8
140	KD4514011	121	168	12,7	1,76	8
160	KD4516011	120	161	14,6	2,21	6
180	KD4518011	108	153	16,4	2,73	3
200	KD4520011	115	165	18,2	3,66	2
225	KD4522511	125	180	20,5	4,79	2
250	KD4525011	135	196	22,7	6,85	2
280	KD4528011	144	214	25,4	9,24	2
315	KD4531511	155	231	28,6	13,00	1



## SPIGOT ELBOW 45° SDR 17



water  
10 bar



gas  
5 bar



hydrogen  
5 bar



PE 100-RC  
material



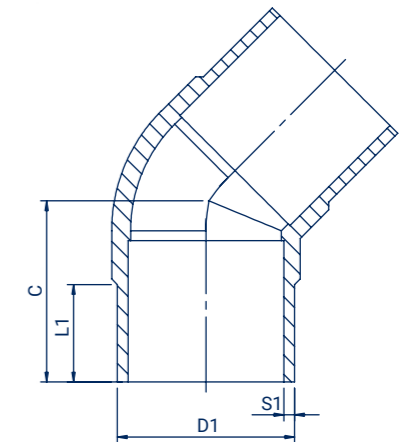
10 MPa



butt  
welding



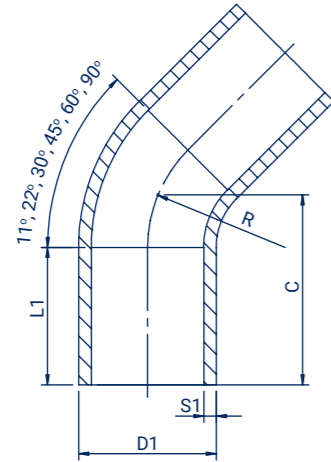
electrofusion  
welding



Size D1 (mm)	Code	L1 (mm)	C (mm)	S1 (mm)	Weight (kg)	Packing
63	KD4506317	65	88	3,8	0,15	6
75	KD4507517	71	90	4,5	0,20	24
90	KD4509017	81	104	5,4	0,32	16
110	KD4511017	109	139	6,6	0,67	8
125	KD4512517	94	124	7,4	0,65	6
140	KD4514017	120	168	8,3	1,28	8
160	KD4516017	120	160	9,5	1,54	6
180	KD4518017	107	151	10,7	1,81	3
200	KD4520017	115	164	11,9	2,39	2
225	KD4522517	125	180	13,4	3,40	2
250	KD4525017	137	196	14,8	4,67	2
280	KD4528017	139	218	16,6	6,32	2
315	KD4531517	155	238	18,7	8,44	1



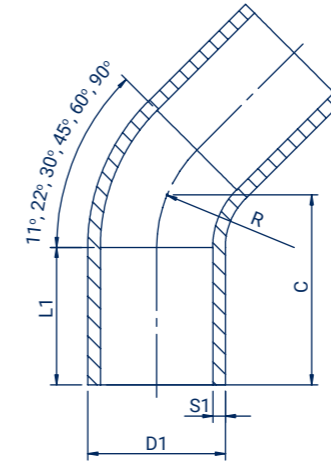
## SEAMLESS BEND 11° SDR 11



Size D1 (mm)	Code	L1 (mm)	C (mm)	S1 (mm)	R (mm)	Weight (kg)	Packing
90	LU1109011	150	350	8,2	135	1,42	1
110	LU1111011	150	330	10	165	2,14	1
125	LU1112511	150	380	11,4	188	3,38	1
140	LU1114011	150	395	12,7	210	3,96	1
160	LU1116011	150	415	14,6	480	5,54	1
180	LU1118011	150	450	16,4	270	7,49	1
200	LU1120011	150	480	18,2	300	9,88	1
225	LU1122511	150	510	20,5	338	13,36	1
250	LU1125011	250	540	22,7	375	17,66	1
280	LU1128011	250	400	25,4	420	16,30	1
315	LU1131511	250	460	28,6	472,5	21,85	1
355	LU1135511	300	540	32,2	532,5	41,00	1
400	LU1140011	300	560	36,3	600	45,90	1
450	LU1145011	300	580	40,9	675	60,20	1
500	LU1150011	350	650	45,4	750	83,30	1
560	LU1156011	350	680	50,8	840	108,60	1
630	LU1163011	350	730	57,2	945	148,30	1
710	LU1171011	350	900	64,5	1065	267,00	1
800	LU1180011	350	950	72,6	1200	292,50	1



## SEAMLESS BEND 11° SDR 17



Size D1 (mm)	Code	L1 (mm)	C (mm)	S1 (mm)	R (mm)	Weight (kg)	Packing
90	LU1109017	120	219	6,6	165	1,10	1
110	LU1111017	150	225	7,4	187,5	1,46	1
125	LU1112517	150	231	8,3	210	2,04	1
140	LU1114017	150	239	9,5	240	2,48	1
160	LU1116017	150	450	10,7	270	5,08	1
180	LU1118017	150	480	11,9	300	6,70	1
200	LU1120017	150	510	13,4	338	9,11	1
225	LU1122517	250	540	14,8	375	11,99	1
250	LU1125017	250	400	16,6	420	12,68	1
280	LU1128017	250	460	18,7	472,5	17,70	1
315	LU1131517	300	540	21,1	532,5	26,22	1
355	LU1135517	300	560	23,7	600	29,80	1
400	LU1140017	300	580	26,7	675	39,10	1
450	LU1145017	350	650	29,7	750	61,80	1
500	LU1150017	350	680	33,2	840	82,00	1
560	LU1156017	350	730	37,4	945	95,80	1
630	LU1163017	350	730	37,4	945	95,80	1
710	LU1171017	350	900	42,1	1065	177,00	1
800	LU1180017	350	950	47,4	1200	195,60	1
900	LU1190017	400	1150	53,3	1350	292,00	1
1000	LU1191017	400	1200	59,3	1500	421,00	1



## SEAMLESS BEND 22°

SDR 11



water  
16 bar



gas  
10 bar



hydrogen  
10 bar



PE 100-RC  
material



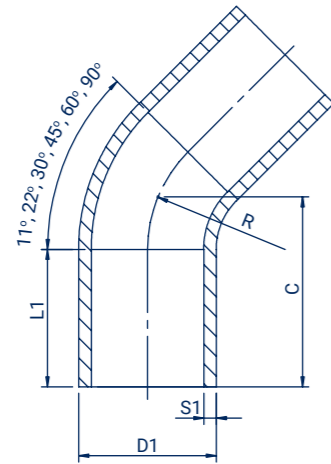
10 MPa



butt  
welding



electrofusion  
welding



Size D1 (mm)	Code	L1 (mm)	C (mm)	S1 (mm)	R (mm)	Weight (kg)	Packing
90	LU2209011	150	350	8,2	135	1,42	1
110	LU2211011	150	330	10	165	2,07	1
125	LU2212511	150	380	11,4	188	3,06	1
140	LU2214011	150	395	12,7	210	3,96	1
160	LU2216011	150	420	14,6	480	5,66	1
180	LU2218011	150	450	16,4	270	7,49	1
200	LU2220011	150	480	18,2	300	9,88	1
225	LU2222511	150	510	20,5	338	13,36	1
250	LU2225011	250	550	22,7	375	17,66	1
280	LU2228011	250	400	25,4	420	16,30	1
315	LU2231511	250	460	28,6	472,5	21,85	1
355	LU2235511	300	540	32,2	532,5	37,00	1
400	LU2240011	300	560	36,3	600	45,90	1
450	LU2245011	300	580	40,9	675	60,20	1
500	LU2250011	350	650	45,4	750	83,30	1
560	LU2256011	350	680	50,8	840	108,60	1
630	LU2263011	350	730	57,2	945	171,00	1
710	LU2271011	350	900	64,5	1065	267,00	1
800	LU2280011	350	950	72,6	1200	292,50	1



## SEAMLESS BEND 22°

SDR 17



water  
10 bar



gas  
5 bar



hydrogen  
5 bar



PE 100-RC  
material



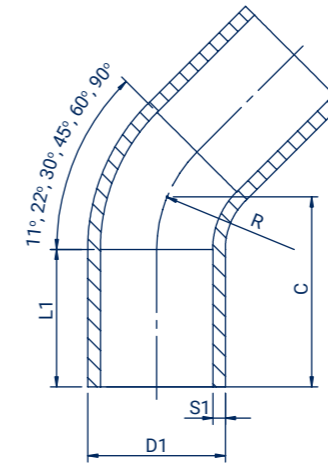
10 MPa



butt  
welding



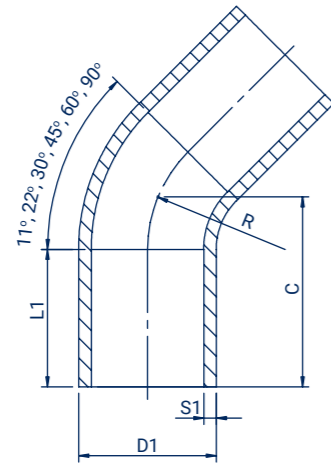
electrofusion  
welding



Size D1 (mm)	Code	L1 (mm)	C (mm)	S1 (mm)	R (mm)	Weight (kg)	Packing
90	LU2209017	150	219	5,4	135	0,98	1
110	LU2211017	120	225	6,6	165	1,12	1
125	LU2212517	150	231	7,4	187,5	1,48	1
140	LU2214017	150	239	8,3	210	1,98	1
160	LU2216017	150	450	9,5	240	2,42	1
180	LU2218017	150	480	10,7	270	5,08	1
200	LU2220017	150	510	11,9	300	6,70	1
225	LU2222517	150	550	13,4	338	9,11	1
250	LU2225017	250	400	14,8	375	11,99	1
280	LU2228017	250	460	16,6	420	12,30	1
315	LU2231517	250	540	18,7	472,5	17,70	1
355	LU2235517	300	560	21,1	532,5	26,00	1
400	LU2240017	300	580	23,7	600	34,00	1
450	LU2245017	300	650	26,7	675	39,10	1
500	LU2250017	350	680	29,7	750	54,00	1
560	LU2256017	350	730	33,2	840	70,30	1
630	LU2263017	350	730	37,4	945	95,80	1
710	LU2271017	350	900	42,1	1065	177,00	1
800	LU2280017	350	950	47,4	1200	195,60	1
900	LU2290017	400	1150	53,3	1350	231,90	1
1000	LU2291017	400	1200	59,30	1500	421,00	1



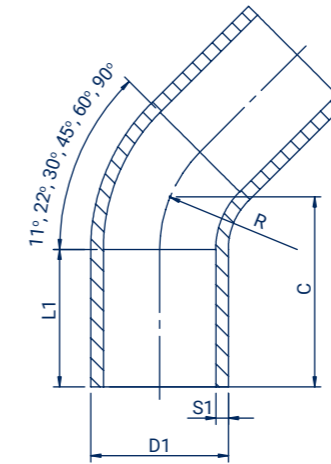
## SEAMLESS BEND 30° SDR 11



Size D1 (mm)	Code	L1 (mm)	C (mm)	S1 (mm)	R (mm)	Weight (kg)	Packing
90	LU3009011	150	350	8,2	135	1,42	1
110	LU3011011	150	330	10	165	2,07	1
125	LU3012511	150	380	11,4	188	3,06	1
140	LU3014011	150	400	12,7	210	3,96	1
160	LU3016011	150	420	14,6	480	5,54	1
180	LU3018011	150	450	16,4	270	7,49	1
200	LU3020011	150	480	18,2	300	9,88	1
225	LU3022511	150	520	20,5	338	13,36	1
250	LU3025011	250	560	22,7	375	17,66	1
280	LU3028011	250	400	25,4	420	18,28	1
315	LU3031511	250	460	28,6	472,5	26,00	1
355	LU3035511	300	540	32,2	532,5	31,70	1
400	LU3040011	300	560	36,3	600	50,20	1
450	LU3045011	300	580	40,9	675	62,00	1
500	LU3050011	350	650	45,4	750	91,00	1
560	LU3056011	350	680	50,8	840	116,00	1
630	LU3063011	350	730	57,2	945	173,00	1
710	LU3071011	350	900	64,5	1065	267,00	1
800	LU3080011	350	950	72,6	1200	292,50	1



## SEAMLESS BEND 30° SDR 17



Size D1 (mm)	Code	L1 (mm)	C (mm)	S1 (mm)	R (mm)	Weight (kg)	Packing
90	LU3009017	150	350	5,4	135	0,98	1
110	LU3011017	120	219	6,6	165	1,18	1
125	LU3012517	150	225	7,4	187,5	1,46	1
140	LU3014017	150	231	8,3	210	1,80	1
160	LU3016017	150	239	9,5	240	2,56	1
180	LU3018017	150	450	10,7	270	5,08	1
200	LU3020017	150	480	11,9	300	6,70	1
225	LU3022517	150	520	13,4	338	9,11	1
250	LU3025017	250	560	14,8	375	11,99	1
280	LU3028017	250	400	16,6	420	13,60	1
315	LU3031517	250	460	18,7	472,5	17,70	1
355	LU3035517	300	540	21,1	532,5	26,00	1
400	LU3040017	300	560	23,7	600	29,80	1
450	LU3045017	300	580	26,7	675	39,10	1
500	LU3050017	350	650	29,7	750	61,80	1
560	LU3056017	350	680	33,2	840	83,00	1
630	LU3063017	350	730	37,4	945	95,80	1
710	LU3071017	350	900	42,1	1065	177,00	1
800	LU3080017	350	950	47,4	1200	195,60	1
900	LU3090017	400	1150	53,3	1350	292,00	1
1000	LU3091017	400	1200	59,3	1500	421,00	1



## SEAMLESS BEND 45°

SDR 11



water  
16 bar



gas  
10 bar



hydrogen  
10 bar



PE 100-RC  
material



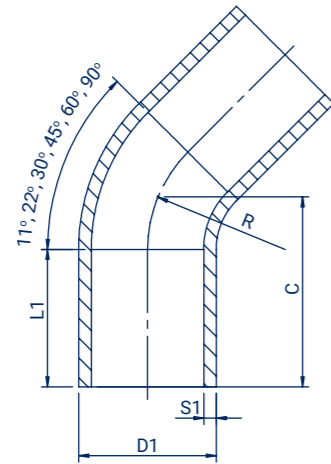
10 MPa



butt  
welding



electrofusion  
welding



Size D1 (mm)	Code	L1 (mm)	C (mm)	S1 (mm)	R (mm)	Weight (kg)	Packing
90	LU4509011	150	350	8,2	135	1,42	1
110	LU4511011	150	340	10	165	2,07	1
125	LU4512511	150	380	11,4	188	3,06	1
140	LU4514011	150	405	12,7	210	3,96	1
160	LU4516011	150	425	14,6	240	5,54	1
180	LU4518011	150	460	16,4	270	7,49	1
200	LU4520011	150	495	18,2	300	9,88	1
225	LU4522511	150	525	20,5	338	13,36	1
250	LU4525011	250	570	22,7	375	17,66	1
280	LU4528011	250	460	25,4	420	20,05	1
315	LU4531511	250	535	28,6	472,5	29,28	1
355	LU4535511	300	620	32,2	532,5	42,20	1
400	LU4540011	300	650	36,3	600	56,00	1
450	LU4545011	300	680	40,9	675	69,80	1
500	LU4550011	350	760	45,4	750	102,40	1
560	LU4556011	350	800	50,8	840	141,00	1
630	LU4563011	350	870	57,2	945	186,00	1
710	LU4571011	350	900	54,5	1065	286,00	1
800	LU4580011	350	950	72,6	1200	340,00	1



## SEAMLESS BEND 45°

SDR 17



water  
10 bar



gas  
5 bar



hydrogen  
5 bar



PE 100-RC  
material



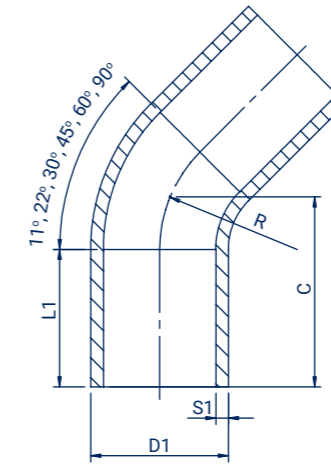
10 MPa



butt  
welding



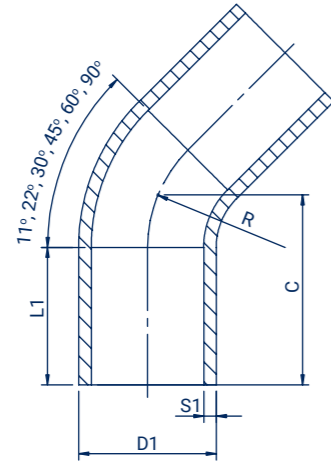
electrofusion  
welding



Size D1 (mm)	Code	L1 (mm)	C (mm)	S1 (mm)	R (mm)	Weight (kg)	Packing
90	LU4509017	150	350	5,4	135	0,98	1
110	LU4511017	120	243	6,6	165	1,22	1
125	LU4512517	150	253	7,4	187,5	1,60	1
140	LU4514017	150	262	8,3	210	1,94	1
160	LU4516017	150	274	9,5	240	2,75	1
180	LU4518017	150	460	10,7	270	5,08	1
200	LU4520017	150	495	11,9	300	6,70	1
225	LU4522517	150	525	13,4	338	9,11	1
250	LU4525017	250	570	14,8	375	11,99	1
280	LU4528017	250	460	16,6	420	13,60	1
315	LU4531517	250	535	18,7	472,5	20,00	1
355	LU4535517	300	620	21,1	532,5	28,50	1
400	LU4540017	300	650	23,7	600	37,00	1
450	LU4545017	300	680	26,7	675	45,30	1
500	LU4550017	350	760	29,7	750	78,00	1
560	LU4556017	350	800	33,2	840	93,00	1
630	LU4563017	350	870	37,4	945	128,00	1
710	LU4571017	350	900	42,1	1065	190,20	1
800	LU4580017	350	950	47,4	1200	218,10	1
900	LU4590017	400	1150	53,3	1350	324,90	1
1000	LU4591017	400	1200	59,30	1500	485,00	1



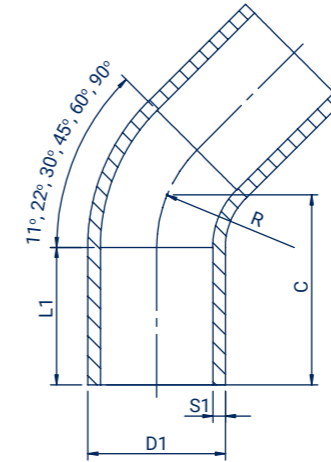
## SEAMLESS BEND 60° SDR 11



Size D1 (mm)	Code	L1 (mm)	C (mm)	S1 (mm)	R (mm)	Weight (kg)	Packing
90	LU6009011	260	350	8,2	135	1,28	1
110	LU6011011	240	340	10	165	2,07	1
125	LU6012511	280	390	11,4	188	2,88	1
140	LU6014011	150	296	12,7	210	3,34	1
160	LU6016011	290	430	14,6	240	5,72	1
180	LU6018011	300	460	16,4	270	8,51	1
200	LU6020011	320	490	18,2	300	10,19	1
225	LU6022511	330	530	20,5	338	13,85	1
250	LU6025011	480	700	22,7	375	22,82	1
280	LU6028011	250	530	25,4	420	24,18	1
315	LU6031511	250	612	28,6	472,5	32,80	1
355	LU6035511	300	690	32,2	532,5	41,70	1
400	LU6040011	300	730	36,3	600	55,80	1
450	LU6045011	300	780	40,9	675	76,00	1
500	LU6050011	350	880	45,4	750	116,50	1
560	LU6056011	350	930	50,8	840	139,50	1
630	LU6063011	350	1000	57,2	945	198,00	1
710	LU6071011	350	1150	64,5	1065	305,00	1
800	LU6080011	350	1250	72,6	1200	385,30	1



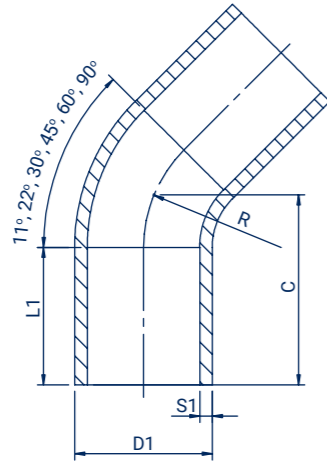
## SEAMLESS BEND 60° SDR 17



Size D1 (mm)	Code	L1 (mm)	C (mm)	S1 (mm)	R (mm)	Weight (kg)	Packing
90	LU6009017	260	350	5,4	135	0,88	1
110	LU6011017	120	270	6,6	165	1,37	1
125	LU6012517	150	283	7,4	187,5	1,67	1
140	LU6014017	150	296	8,3	210	2,20	1
160	LU6016017	150	313	9,5	240	3,20	1
180	LU6018017	300	460	10,7	270	5,77	1
200	LU6020017	320	490	11,9	300	7,10	1
225	LU6022517	330	530	13,4	338	9,39	1
250	LU6025017	250	500	14,8	375	9,50	1
280	LU6028017	250	530	16,6	420	15,78	1
315	LU6031517	250	612	18,7	472,5	19,50	1
355	LU6035517	300	690	21,1	532,5	30,10	1
400	LU6040017	300	730	23,7	600	38,20	1
450	LU6045017	300	780	26,7	675	53,70	1
500	LU6050017	350	880	29,7	750	73,90	1
560	LU6056017	350	930	33,2	840	98,20	1
630	LU6063017	350	1000	37,4	945	132,30	1
710	LU6071017	350	1150	42,1	1065	213,00	1
800	LU6080017	350	1250	47,4	1200	260,70	1
900	LU6090017	400	1450	53,3	1350	385,50	1
1000	LU6091017	400	1600	59,3	1500	507,60	1



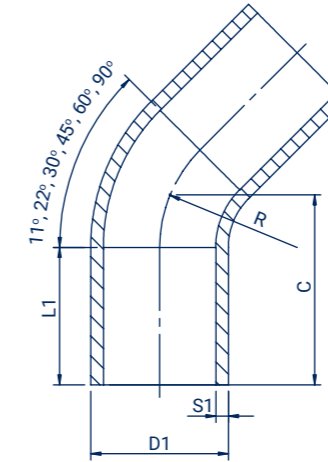
## SEAMLESS BEND 90° SDR 11



Size D1 (mm)	Code	L1 (mm)	C (mm)	S1 (mm)	R (mm)	Weight (kg)	Packing
90	LU9009011	150	380	8,2	135	1,28	1
110	LU9011011	120	315	10	165	1,87	1
125	LU9012511	150	470	11,4	188	2,88	1
140	LU9014011	150	385	12,7	210	3,72	1
160	LU9016011	150	550	14,6	240	5,72	1
180	LU9018011	150	590	16,4	270	8,51	1
200	LU9020011	150	650	18,2	300	10,19	1
225	LU9022511	150	675	20,5	338	13,85	1
250	LU9025011	250	780	22,7	375	22,82	1
280	LU9028011	250	695	25,4	420	24,30	1
315	LU9031511	250	803	28,6	472,5	36,80	1
355	LU9035511	180	560	32,2	532,5	34,03	1
400	LU9040011	300	980	36,3	600	75,00	1
450	LU9045011	195	645	40,9	675	69,12	1
500	LU9050011	212	710	45,4	750	91,04	1
560	LU9056011	350	1290	50,8	840	176,00	1
630	LU9063011	350	1400	57,2	945	239,00	1
710	LU9071011	350	1415	64,5	1065	324,00	1
800	LU9080011	350	1550	72,6	1200	423,00	1



## SEAMLESS BEND 90° SDR 17



Size D1 (mm)	Code	L1 (mm)	C (mm)	S1 (mm)	R (mm)	Weight (kg)	Packing
90	LU9009017	150	380	5,4	135	0,88	1
110	LU9011017	120	340	6,6	165	1,24	1
125	LU9012517	150	363	7,4	187,5	1,90	1
140	LU9014017	150	385	8,3	210	2,66	1
160	LU9016017	150	415	9,5	240	3,36	1
180	LU9018017	150	590	10,7	270	5,77	1
200	LU9020017	150	650	11,9	300	7,10	1
225	LU9022517	150	675	13,4	338	9,39	1
250	LU9025017	250	650	14,8	375	12,50	1
280	LU9028017	250	695	16,6	420	17,10	1
315	LU9031517	250	803	18,7	472,5	25,00	1
355	LU9035517	300	900	21,1	532,5	41,22	1
400	LU9040017	300	980	23,7	600	49,70	1
450	LU9045017	195	645	26,7	675	50,72	1
500	LU9050017	212	710	29,7	750	66,94	1
560	LU9056017	350	1290	33,2	840	120,00	1
630	LU9063017	350	1400	37,4	945	169,00	1
710	LU9071017	350	1415	42,1	1065	263,00	1
800	LU9080017	350	1550	47,4	1200	284,00	1
900	LU9090017	400	1750	53,3	1350	428,00	1
1000	LU9091017	400	1900	59,3	1500	573,00	1



## SPIGOT TEE SDR 11



water  
16 bar



gas  
10 bar



hydrogen  
10 bar



PE 100-RC  
material



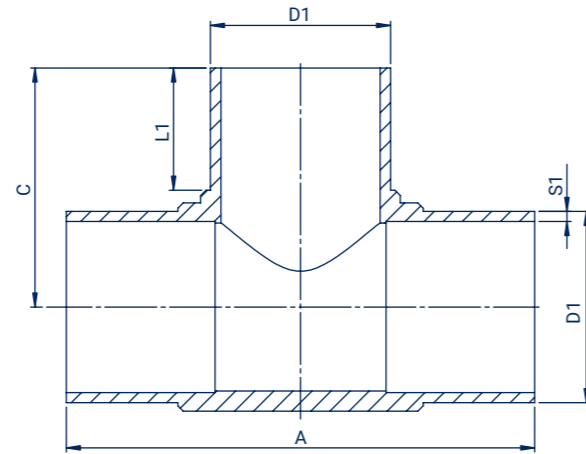
10 MPa



butt  
welding



electrofusion  
welding



Size D1 (mm)	Code	A (mm)	L1 (mm)	C (mm)	S1 (mm)	Weight (kg)	Packing
25	TD02511	117	39	59	3	0,04	-
32	TD03211	139	46	67	3	0,06	10
40	TD04011	165	50	84	3,7	0,11	10
50	TD05011	189	56	95	4,6	0,18	6
63	TD06311	216	65	105	5,8	0,34	16
75	TD07511	248	72	122	6,8	0,54	5
90	TD09011	292	84	146	5,4	0,87	10
110	TD11011	315	87	157	10	1,35	8
125	TD12511	332	90	165	11,4	1,95	6
140	TD14011	399	104	200	12,7	3,21	-
160	TD16011	396	106	200	14,6	3,50	2
180	TD18011	430	110	219	16,4	4,90	2
200	TD20011	471	121	235	18,2	6,55	2
225	TD22511	507	127	261	20,5	8,95	1
250	TD25011	556	135	281	22,7	12,32	1
280	TD28011	610	146	350	25,4	16,36	1
315	TD31511	665	155	330	28,6	23,05	1
355	TD35511	829	167	414	32,2	38,02	-
400	TD40011	913	198	457	36,3	52,01	-
450	TD45011	954	198	477	40,9	74,60	-
500	TD50011	1050	218	525	45,4	100,00	-



## SPIGOT TEE SDR 17



water  
10 bar



gas  
5 bar



hydrogen  
5 bar



PE 100-RC  
material



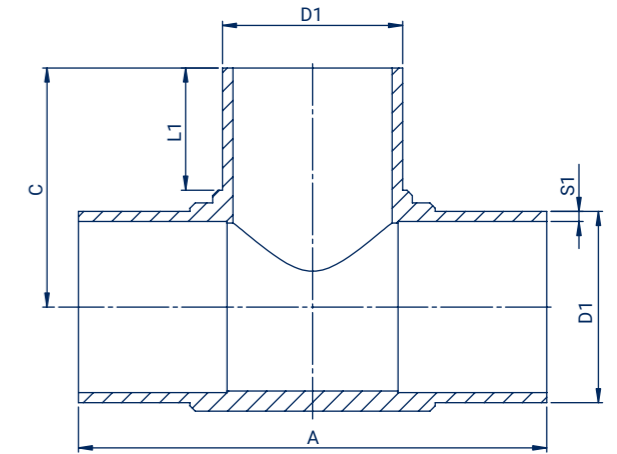
10 MPa



butt  
welding



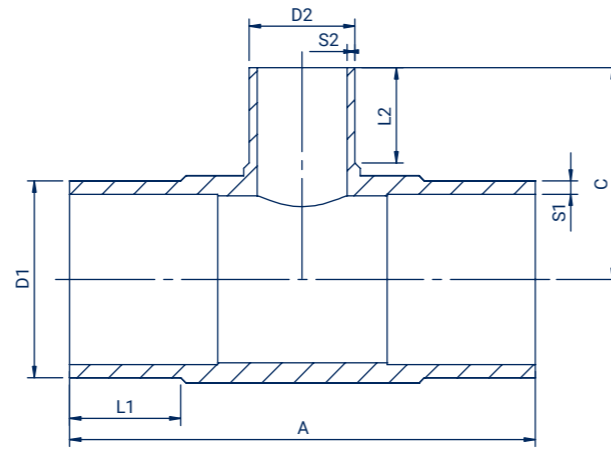
electrofusion  
welding



Size D1 (mm)	Code	A (mm)	L1 (mm)	C (mm)	S1 (mm)	Weight (kg)	Packing
63	TD06317	222	63	113	3,8	0,26	10
75	TD07517	246	72	122	4,5	0,40	5
90	TD09017	285	81	142	5,4	0,60	10
110	TD11017	319	88	158	6,6	1,04	10
125	TD12517	331	90	165	7,4	1,32	6
140	TD14017	395	104	197	8,3	2,21	-
160	TD16017	396	104	200	9,5	2,53	4
180	TD18017	427	110	215	10,7	3,49	2
200	TD20017	466	118	240	11,9	4,59	2
225	TD22517	505	126,5	251	13,4	6,20	1
250	TD25017	557	136	279	14,8	8,37	1
280	TD28017	610	145	305	16,6	11,30	1
315	TD31517	665	155	330	18,7	15,50	1
355	TD35517	818	165	408	21,1	25,98	-
400	TD40017	910	197	455	23,7	36,06	-
450	TD45017	955	197	478	26,7	50,62	-
500	TD50017	1050	218	525	29,7	68,32	-



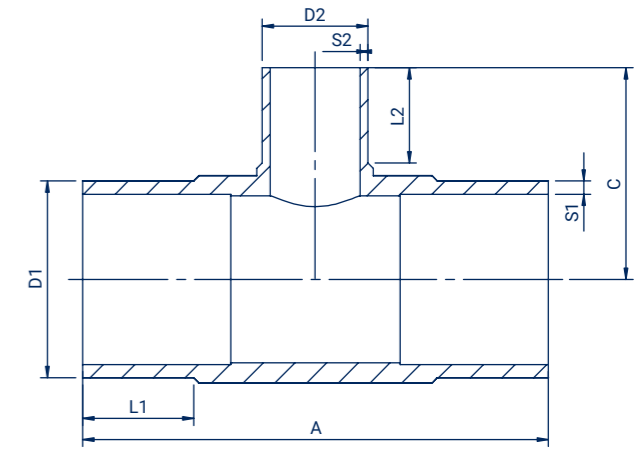
## SPIGOT REDUCING TEE SDR 11



Size D1/D2 (mm)	Code	A (mm)	L1 (mm)	L2 (mm)	C (mm)	S1 (mm)	S2 (mm)	Weight (kg)	Packing
63/50	TD06305011	216	60	56	102,5	5,8	4,6	0,30	0
75/50	TD07505011	257	70	56	110	6,8	4,6	0,50	0
75/63	TD07506311	252	70	63	117	6,8	5,8	0,55	0
90/63	TD09006311	284	81	66	127	8,2	5,8	0,75	12
90/75	TD09007511	268	73	68	138	8,2	6,8	0,80	0
110/63	TD11006311	315	88	70	143	10	5,8	1,16	5
110/75	TD11007511Z	305	83	68	149	10	6,8	1,20	0
110/90	TD11009011	315	88	85	155	10	8,2	1,26	5
125/63	TD12506311	331	89	67	148	11,4	5,8	1,67	6
125/90	TD12509011	331	89	83	161	11,4	8,2	1,76	6
125/110	TD12511011	332	90	86	162	11,4	10	1,83	6
160/63	TD16006311	397	104	72	170	14,6	5,8	2,98	4
160/90	TD16009011	397	104	87	183	14,6	8,2	2,98	4
160/110	TD16011011	397	104	91	183	14,6	10	3,06	5
180/90	TD18009011	429	111	86	180	16,4	8,2	4,20	2
180/110	TD18011011	430	110	89	195	16,4	10	4,27	2
180/160	TD18016011	430	110	104	210	16,4	14,6	4,69	2
200/90	TD20009011	550	134,5	96	229	18,2	8,2	7,16	2
200/110	TD20011011Z	505	124	86	219	18,2	10	7,08	0
200/160	TD20016011	470	120	105	224	18,2	14,6	6,03	2
225/90	TD22509011	442	120	79	224	20,5	8,2	6,86	0
225/110	TD22511011	505	127	90	220	20,5	10	7,49	2
225/160	TD22516011	505	126	104	235	20,5	14,6	7,82	2
250/110	TD25011011	560	136	90	238	22,7	10	10,97	1
250/160	TD25016011	560	136	107	255	22,7	14,6	10,90	1
280/110	TD28011011	606	145	90	250	25,4	10	14,09	1
280/160	TD28016011	606	145	106	268	25,4	14,6	14,42	1
280/225	TD28022511	610	145	127	290	25,4	20,5	15,18	1
280/250	TD28025011	606	145	136	295	25,4	22,7	15,72	1
315/110	TD31511011	664	157	90	270	28,6	10	19,20	1
315/160	TD31516011	665	155	106	290	28,6	14,6	19,45	1
315/225	TD31522511	665	156	130	312	28,6	20,5	20,31	1
315/250	TD31525011	665	157	138	315	28,6	22,7	20,68	1



## SPIGOT REDUCING TEE SDR 17



Size D1/D2 (mm)	Code	A (mm)	L1 (mm)	L2 (mm)	C (mm)	S1 (mm)	S2 (mm)	Weight (kg)	Packing
75/63	TD07506317	255	70	63	117	4,5	3,8	0,45	-
90/63	TD09006317	287	83	67	131	5,4	3,8	0,53	12
90/75	TD09007517	272	73	68	138	5,4	4,5	0,59	-
110/63	TD11006317	315	88	68	143	6,6	3,8	0,92	6
110/75	TD11007517Z	311	83	70	152	6,6	4,5	0,90	-
110/90	TD11009017	317	87	84	157	6,6	5,4	1,00	5
125/63	TD12506317	330	89	67	148	7,4	3,8	1,15	6
125/90	TD12509017	330	88	82	165	7,4	5,4	1,21	6
125/110	TD12511017	331	89	85	163	7,4	6,6	1,26	6
160/63	TD16006317	395	104	71	170	9,5	3,8	2,13	6
160/75	TD16007517	395	103	85	185	9,5	5,4	2,22	5
160/90	TD16011017	395	103	89	183	9,5	6,6	2,27	5
160/110	TD16009017	425	110	84	195	10,4	5,4	3,01	2
180/90	TD18011017	426	110	87	190	10,7	6,6	3,07	2
180/110	TD18016017	425	110	103	210	10,7	9,5	3,30	2
180/160	TD20009017	504	125	82	216	11,9	5,4	5,01	2
200/63	TD20011017	465	120	89	198	11,9	6,6	4,02	4
200/90	TD20016017	465	119	105	223	11,9	9,5	4,25	2
200/110	TD22509017	555	129	82	226	13,4	5,4	7,05	3
200/125	TD22511017	505	126	89	220	13,4	6,6	5,34	2
200/160	TD22516017	505	126	104	235	13,4	9,5	5,53	2
225/90	TD25011017	550	135	90	236	14,8	6,6	7,34	1
225/110	TD25016017	550	135	105	250	14,8	9,5	7,60	1
225/160	TD25022517	550	135	126	270	14,8	13,4	8,28	1
250/110	TD28011017	605	145	90	255	16,6	6,6	10,05	1
225/160	TD28016017	600	145	106	280	16,6	9,5	10,19	1
250/225	TD28022517	605	145	126	290	16,6	13,4	10,92	1
280/110	TD28025017	605	144	135	295	16,6	14,8	11,29	1
280/160	TD31511017	663	156	90	270	18,7	6,6	13,61	1
280/225	TD31516017	660	155	106	290	18,7	9,5	13,68	1
280/250	TD31522517	660	155	128	307	18,7	13,4	14,27	1
315/110	TD31525017	665	156	138	320	18,7	14,8	14,54	1
315/160	TD31516017	660	155	106	290	18,7	9,5	13,68	1
315/200	TD31520017	640	168	130	331	18,7	11,9	15,94	1
315/225	TD31522517	660	155	128	307	18,7	13,4	14,27	1
315/250	TD31525017	665	156	138	320	18,7	14,8	14,54	1



## SPIGOT END CAP SDR 11



water  
16 bar



gas  
10 bar



hydrogen  
10 bar



PE 100-RC  
material



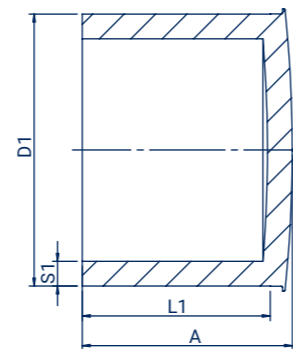
10 MPa



butt  
welding



electrofusion  
welding



Size D1 (mm)	Code	A (mm)	L1 (mm)	S1 (mm)	Weight (kg)	Packing
25	ZD02511	45	34	3	0,01	200
32	ZD03211	45	34	3	0,02	250
40	ZD04011	47	34	3,7	0,03	200
50	ZD05011	49	34	4,6	0,05	200
63	ZD06311	61	45	5,8	0,09	140
75	ZD07511	68	51	6,8	0,14	75
90	ZD09011	80	71	8,2	0,24	50
110	ZD11011	85	76	10	0,29	30
125	ZD12511	85	81	11,4	0,43	25
140	ZD14011	89	85	12,7	0,75	18
160	ZD16011	89	82	14,6	0,84	15
180	ZD18011	167	113	16,4	1,42	-
200	ZD20011	180	117	18,2	1,91	-
225	ZD22511	203	127	20,5	2,76	-
250	ZD25011	217	138	22,7	3,66	4
280	ZD28011	239	151	25,4	5,01	-
315	ZD31511	256	158	28,6	6,85	-
355	ZD35511	291	175	32,2	9,73	-
400	ZD40011	316	193	36,3	13,57	-



## SPIGOT END CAP SDR 17



water  
10 bar



gas  
5 bar



hydrogen  
5 bar



PE 100-RC  
material



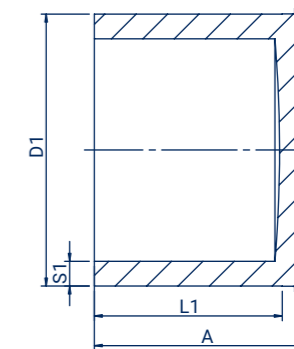
10 MPa



butt  
welding



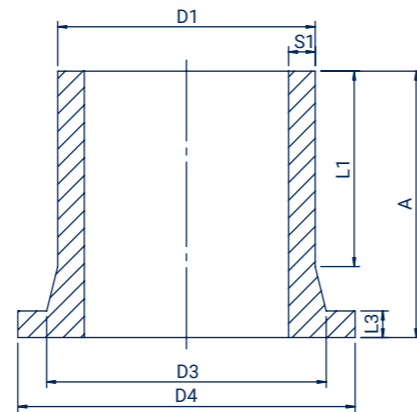
electrofusion  
welding



Size D1 (mm)	Code	A (mm)	L1 (mm)	S1 (mm)	Weight (kg)	Packing
63	ZD06317	61	45	3,8	0,06	140
75	ZD07517	68	51	4,5	0,09	100
90	ZD09017	80	71	5,4	0,16	50
110	ZD11017	85	76	6,6	0,24	30
125	ZD12517	85	81	7,4	0,36	25
140	ZD14017	89	85	8,3	0,51	15
160	ZD16017	86	84	9,5	0,77	15
180	ZD18017	166	114	10,7	0,98	-
200	ZD20017	179	117	11,9	1,30	-
225	ZD22517	203	127	13,4	1,81	-
250	ZD25017	216	140	14,8	2,42	-
280	ZD28017	238	149	16,6	3,36	-
315	ZD31517	258	158	18,7	4,57	-
355	ZD35517	281	175	21,1	6,46	-
400	ZD40017	310	195	23,7	9,29	1



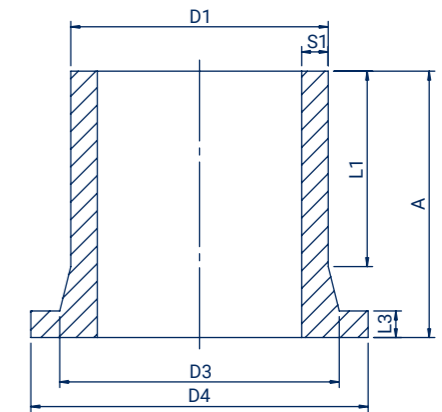
## LONG SPIGOT FLANGE ADAPTOR SDR 11



Size D1 (mm)	Code	D4 (mm)	D3 (mm)	A (mm)	L1 (mm)	L3 (mm)	S1 (mm)	Weight (kg)	Packing
32	TK03211	68	40	86	62	10	3	0,05	100
40	TK04011	78	50	89	62	11	3,7	0,08	25
50	TK05011	88	60	90	62	12	4,6	0,12	50
63	TK06311	102	69	104	68	14	5,8	0,18	50
75	TK07511	120	81	123	91	16	6,8	0,30	30
90	TK09011	136	98	138	105	18	8,2	0,44	20
110	TK11011	154	121	155	111	20	10	0,66	12
125	TK12511	157	128	167	122	25	11,4	0,86	20
140	TK14011	189	155	174	126	26	12,7	1,20	12
160	TK16011	209	165	206	154	26	14,6	1,78	12
180	TK18011	212	182	176	152	21	16,4	1,77	12
200	TK20011	268	234	187	133	33	18,2	2,89	5
225	TK22511	269	236	185	130	33	20,5	2,95	4
250	TK25011	326	286	216	140	36	22,7	4,96	2
280	TK28011	323	293	231	185	36	25,4	5,26	2
315	TK31511	371	337	237	165	36	28,6	7,23	2
355	TK35511	430	373	259	174	43	32,2	10,44	2
400	TK40011	482	427	267	181	45	36,3	13,98	1
450	TK45011	585	514	340	220	60	40,9	19,93	-
500	TK50011	585	530	345	235	60	45,5	21,99	-
560	TK56011	685	615	381	260	60	50,9	33,80	-
630	TK63011	685	645	375	270	65	57,3	37,50	-



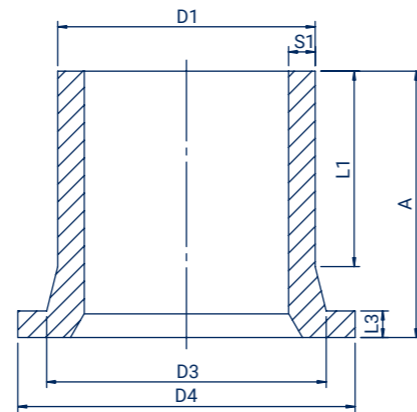
## LONG SPIGOT FLANGE ADAPTOR SDR 17



Size D1 (mm)	Code	D4 (mm)	D3 (mm)	A (mm)	L1 (mm)	L3 (mm)	S1 (mm)	Weight (kg)	Packing
63	TK06317	101	72	104	67	14	3,8	0,15	50
75	TK07517	120	84	126	94	16	4,5	0,25	30
90	TK09017	136	100	140	106	17	5,4	0,35	20
110	TK11017	154	115	155	112	20	6,6	0,54	12
125	TK12517	156	129	171	125	25	7,4	0,65	20
140	TK14017	188	156	174	126	26	8,3	0,93	12
160	TK16017	209	166	207	157	25	9,5	1,44	12
180	TK18017	211	185	178	153	21	10,7	1,27	12
200	TK20017	268,5	232,5	187	132	33	11,9	2,31	5
225	TK22517	269	236	190	131	33	13,4	2,22	4
250	TK25017	321	286	217	137	36	14,8	3,97	2
280	TK28017	322	292	228	143	36	16,6	3,94	2
315	TK31517	371,5	336	238	156	36	18,7	5,25	2
355	TK35517	430	373	257	174	41	21,1	7,82	2
400	TK40017	427	482	265	180	43	23,7	10,19	1
450	TK45017	585	514	326	220	46	26,5	13,83	-
500	TK50017	585	530	331	235	46	29,5	15,21	-
560	TK56017	685	615	371	260	50	33	17,18	-
630	TK63017	685	645	360	270	50	37,1	24,86	-
710	TK71017	800	738	495	395	50	42,1	47,00	-
800	TK80017	905	836	497	395	52	47,4	59,00	-
900	TK90017	1005	944	495	390	55	53,3	71,00	-
1000	TK910017	1110	1047	520	390	60	59,3	85,00	-



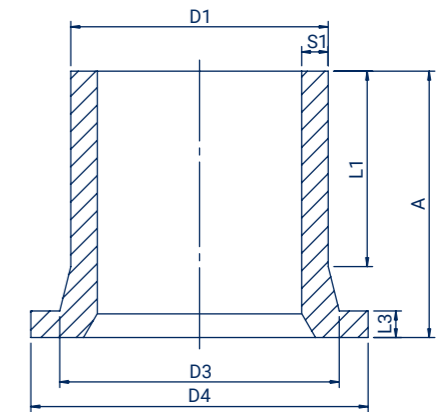
## SPIGOT FLANGE ADAPTOR CHAMFERED SDR 11



Size D1 (mm)	Code	D4 (mm)	D3 (mm)	A (mm)	L1 (mm)	L3 (mm)	S1 (mm)	Weight (kg)	Packing
110	TK11011C	154	121	155	111	20	10	0,67	12
140	TK14011C	189	155	174	126	26	12,7	1,28	12
160	TK16011C	209	165	206	154	26	14,6	1,78	12
180	TK18011C	212	182	176	152	21	16,4	1,74	12
200	TK20011C	268	234	187	133	33	18,2	2,81	5
225	TK22511C	269	236	185	130	33	20,5	2,90	4
250	TK25011C	321	286	216	140	36	22,7	4,65	6
280	TK28011C	323	293	231	185	36	25,4	5,63	6
315	TK31511C	371	337	237	165	36	28,6	7,49	2



## SPIGOT FLANGE ADAPTOR CHAMFERED SDR 17



Size D1 (mm)	Code	D4 (mm)	D3 (mm)	A (mm)	L1 (mm)	L3 (mm)	S1 (mm)	Weight (kg)	Packing
200	TK20017C	269	233	187	132	33	11,9	2,31	5
225	TK22517C	269	236	190	131	33	13,4	2,22	4
250	TK25017C	321	286	217	137	36	14,8	3,97	6
280	TK28017C	322	292	228	143	36	16,6	3,94	6
315	TK31517C	371,5	336	238	156	36	18,7	5,25	2



# LONG SPIGOT REDUCER

## SDR 11



water  
16 bar



gas  
10 bar



hydrogen  
10 bar



PE 100-RC  
material



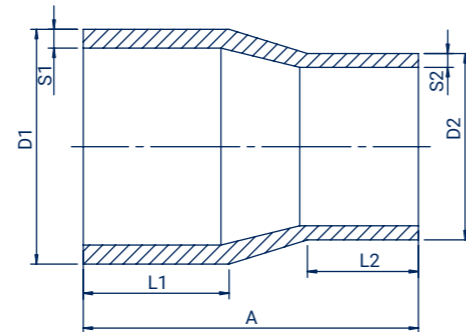
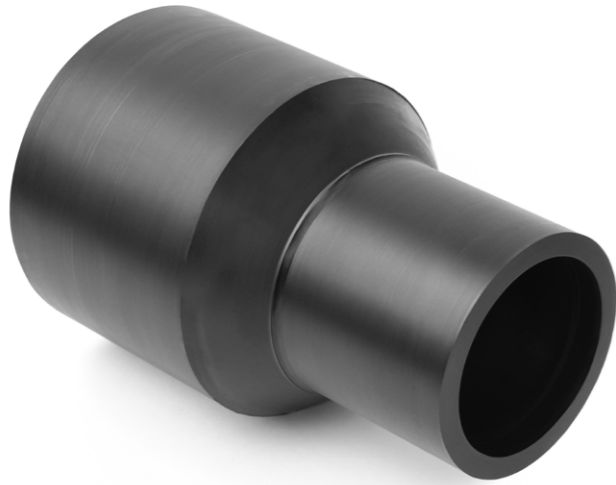
10 MPa



butt  
welding



electrofusion  
welding



Size D1/D2 (mm)	Code	A (mm)	L1 (mm)	L2 (mm)	S1 (mm)	S2 (mm)	Weight (kg)	Packing
25/20	RD02502011	87	41	41	3	3	0,02	-
32/20	RD03202011	95	44	41	3	3	0,02	-
32/25	RD03202511	95	44	41	3	3	0,02	-
40/25	RD04002511	102	49	41	3,7	3	0,03	-
40/32	RD04003211	101	49	44	3,7	3	0,04	-
50/25	RD05002511	118	55	43	4,6	3	0,06	5
50/32	RD05003211	118	58	45	4,6	3	0,07	5
50/40	RD05004011	126	56	49	4,6	3,7	0,06	-
63/32	RD06303211	135	63	48	5,8	3	0,11	-
63/40	RD06304011	129	63	49	5,8	3,7	0,12	-
63/50	RD06305011	148	63	58	5,8	4,6	0,14	10
75/50	RD07505011	148	70	57	6,8	4,6	0,20	-
75/63	RD07506311	145	70	58	6,8	5,8	0,19	50
90/50	RD09005011	174	79	57	8,2	4,6	0,28	20
90/63	RD09006311	168	74	63	8,2	5,8	0,26	30
90/75	RD09007511	160	74	65	8,2	6,8	0,28	30
110/63	RD11006311	175	81	64	10	5,8	0,39	24
110/75	RD11007511	169	82	63	10	6,8	0,40	20
110/90	RD11009011	173	81	71	10	8,2	0,45	20
125/63	RD12506311	200	91	69	11,4	5,8	0,64	-
125/90	RD12509011	202	91	80	11,4	8,2	0,66	-
125/110	RD12511011	200	90	90	11,4	10	0,76	-
140/90	RD14009011	237	112	86	12,7	8,2	0,95	-
140/110	RD14011011	230	116	90	12,7	10	1,03	-
140/125	RD14012511	235	117	96	12,7	11,4	1,14	-

Size D1/D2 (mm)	Code	A (mm)	L1 (mm)	L2 (mm)	S1 (mm)	S2 (mm)	Weight (kg)	Packing
160/90	RD16009011	254	109	84	14,6	8,2	1,25	5
160/110	RD16011011	254	110	89	14,6	10	1,35	10
160/125	RD16012511	254	110	95	14,6	11,4	1,43	5
160/140	RD16014011	254	110	106	14,6	12,7	1,53	-
180/110	RD18011011	275	124	93	16,4	10	1,79	-
180/125	RD18012511	245	105	87	16,4	11,4	1,73	-
180/160	RD18016011	279	126	125	16,4	14,6	2,19	-
200/140	RD20014011	279	123	114	18,2	12,7	2,33	-
200/160	RD20016011	277	122	122	18,2	14,6	2,44	-
200/180	RD20018011	279	126	120	18,2	16,4	2,73	-
225/160	RD22516011	295	132	123	20,5	14,6	3,14	2
225/180	RD22518011	285	130	118	20,5	16,4	3,30	-
225/200	RD22520011	272	126	120	20,5	18,2	3,40	-
250/160	RD25016011	314	153,5	111,5	22,7	14,6	3,99	2
250/180	RD25018011	316	151	105	22,7	16,4	4,36	-
250/200	RD25020011	324	151	116	22,7	18,2	4,73	-
250/225	RD25022511	330	155	122	22,7	20,5	5,28	2
280/200	RD28020011	345	140	116	25,4	18,2	5,79	-
280/225	RD28022511	335	142	122	25,4	20,5	6,11	-
280/250	RD28025011	340	139	135	25,4	22,7	6,69	-
315/225	RD31522511	365	150	125	28,6	20,5	8,13	-
315/250	RD31525011	365	150	134	28,6	22,7	8,47	-
315/280	RD31528011	365	150	145	28,6	25,4	8,89	-



## LONG SPIGOT REDUCER

SDR 17



water  
10 bar



gas  
5 bar



hydrogen  
5 bar



PE 100-RC  
material



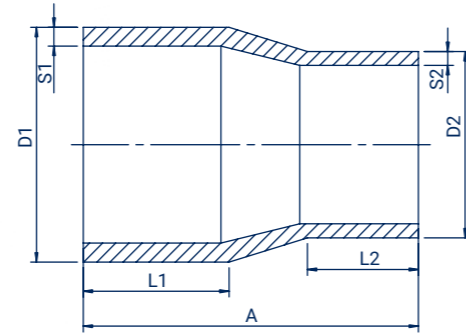
MRS  
10 MPa



butt  
welding



electrofusion  
welding



Size D1/D2 (mm)	Code	A (mm)	L1 (mm)	L2 (mm)	S1 (mm)	S2 (mm)	Weight (kg)	Packing
75/63	RD07506317	146	68	60	4,6	3,9	0,17	50
90/63	RD09006317	168	74	63	5,6	3,9	0,24	30
90/75	RD09007517	160	75	63	5,6	4,6	0,26	30
110/63	RD11006317	176	80	64	6,8	3,9	0,38	24
110/75	RD11007517	170	82	64	6,8	4,6	0,35	20
110/90	RD11009017	173	81	71	6,8	5,6	0,43	20
125/63	RD12506317	200	90	68	7,4	3,8	0,45	-
125/90	RD12509017	200	90	81	7,4	5,4	0,46	-
125/110	RD12511017	200	91	90	7,4	6,6	0,53	-
140/90	RD14009017	235	112	86	8,3	5,4	0,64	-
140/110	RD14011017	237	114	91	8,3	6,6	0,70	-
140/125	RD14012517	235	117	96	8,3	7,4	0,74	-
160/90	RD16009017	254	109	84	9,5	5,4	0,83	5
160/110	RD16011017	254	110	89	9,5	6,6	0,89	10
160/125	RD16012517	254	110	95	9,5	7,4	0,93	5
160/140	RD16014017	254	110	106	9,5	8,3	1,00	-
180/110	RD18011017	275	124	93	10,7	6,6	1,19	-
180/125	RD18012517	250	105	87	10,7	7,4	1,17	-
180/160	RD18016017	279	126	125	10,7	9,5	1,43	-
200/160	RD20016017	278	122	124	11,9	9,5	1,69	4
200/180	RD20018017	279	126	120	11,9	10,7	1,79	-
225/160	RD22516017	295	134	123	13,4	9,5	2,14	2
225/180	RD22518017	275	125	118	13,4	10,7	2,24	-
225/200	RD22520017	272	126	120	13,4	11,9	2,26	-
250/160	RD25016017	308	151	98	14,8	9,5	2,88	2
250/180	RD25018017	316	153	105	14,8	10,7	2,99	-
250/200	RD25020017	325	154	113	14,8	11,9	3,25	-
250/225	RD25022517	330	155	122	14,8	13,4	3,70	2
280/200	RD28020017	330	142	116	16,6	11,9	3,94	-
280/225	RD28022517	335	140	124	16,6	13,4	4,08	-
280/250	RD28025017	340	139	134	16,6	14,8	4,45	-
315/225	RD31522517	371	152	125	18,7	13,4	5,42	-
315/250	RD31525017	367	151	133	18,7	14,8	5,72	-
315/280	RD31528017	369	150	140	18,7	16,6	5,98	-



## COVERED FLANGES

PP



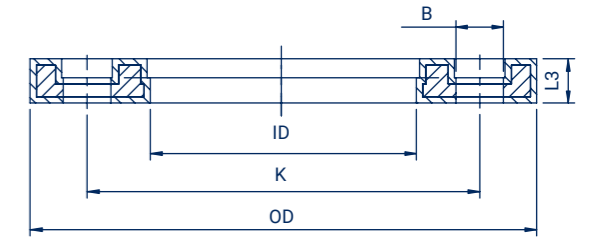
water



gas



coating  
PP reinforced with glass fiber



D2* (mm)	D1** (mm)	Code	OD (mm)	ID (mm)	B (mm)	K (mm)	L3 (mm)	Holes	Screws	Weight (kg)	Pressure (bar)	Packing
DN15	20	KPP020015.IP	106	28	14	65	18	4	M12	0,40	10/16	-
DN20	25	KPP025020.IP	118	34	14	75	18	4	M12	0,40	10/16	-
DN25	32	KPP032025.IP	122	42	14	85	17	4	M12	0,40	10/16	-
DN32	40	KPP040032.IP	142	51	18	100	17	4	M16	0,50	10/16	-
DN40	50	KPP050040.IP	156	62	18	110	19	4	M16	0,70	10/16	-
DN50	63	KPP063050.IP	171	78	18	125	20	4	M16	0,90	10/16	-
DN65	75	KPP075065.IP	191	92	18	145	21	4	M16	1,00	10/16	-
DN80	90	KPP090080.IP	206	108	18	160	21	8	M16	1,10	10/16	12
DN100	110	KPP110100.IP	226	128	18	180	22	8	M16	1,20	10/16	10
DN100	125	KPP125100.IP	226	135	18	180	23	8	M16	1,40	10/16	-
DN125	140	KPP140125.IP	261	158	18	210	25	8	M16	1,70	10/16	-
DN150	160	KPP160150.IP	296	178	22	240	28	8	M20	1,80	10/16	4
DN150	180	KPP180150.IP	296	188	22	240	27	8	M20	1,90	10/16	15
DN200	200	KPP200200.IP	350	235	22	295	32	8	M20	3,10	10	-
DN200	200	KPP20020016.IP	350	235	22	295	32	12	M20	3,31	16	6
DN200	225	KPP22520010.IP	350	238	22	295	31	8	M20	3,10	10	-
DN200	225	KPP22520016.IP	350	238	22	295	31	12	M20	3,19	16	4
DN250	250	KPP25025010.IP	412	288	22	350	36	12	M20	4,90	10	-
DN250	250	KPP25025016.IP	420	288	26	355	36	12	M24	5,17	16	-
DN250	280	KPP28025010.IP	412	294	22	350	35	12	M20	4,40	10	-
DN250	280	KPP28025016.IP	420	294	26	355	35	12	M24	6,30	16	-
DN300	315	KPP31530010.IP	462	338	22	400	42	12	M20	6,40	10	-
DN300	315	KPP31530016.IP	476	338	26	410	42	12	M24	9,70	16	-
DN350	355	KPP35535010.IP	525	376	22	460	52	16	M20	11,10	10	-
DN350	355	KPP35535016.IP	532	376	26	470	52	16	M24	16,30	16	-
DN400	400	KPP40040010.IP	586	430	26	515	56	16	M24	14,70	10	-
DN400	400	KPP40040016.IP	600	430	30	525	56	16	M27	20,60	16	-
DN500	450	KPP45050010.IP	690	514	27	620	54,5	20	M24	20,30	10	-
DN500	500	KPP50050010.IP	690	530	27	620	55	20	M24	19,20	10	-
DN600	560	KPP56060010.IP	804	615	30	725	62	20	M27	30,00	10	-
DN600	560	KPP56060016.IP	856	618	36	770	114	20	M33	47,68	16	-
DN600	630	KPP63060010.IP	804	642	30	725	62	20	M27	27,70	10	-
DN600	630	KPP63060016.IP	856	645	36	770	114	20	M33	47,68	16	-
DN700	710	KPP71070010.IP	912	740	30	840	49	24	M27	28,60	6	-
DN800	800	KPP80080010.IP	1 026	843	33	950	58	24	M30	39,30	6	-
DN900	900	KPP90090010.IP	1 129	947	33	1 050	62	28	M30	48,50	6	-
DN1000	1 000	KPP91091010.IP	1 245	1 050	36	1 160	70	28	M33	60,00	6	-

\* Size designation of flange | \*\* Nominal outside diameter of pipe

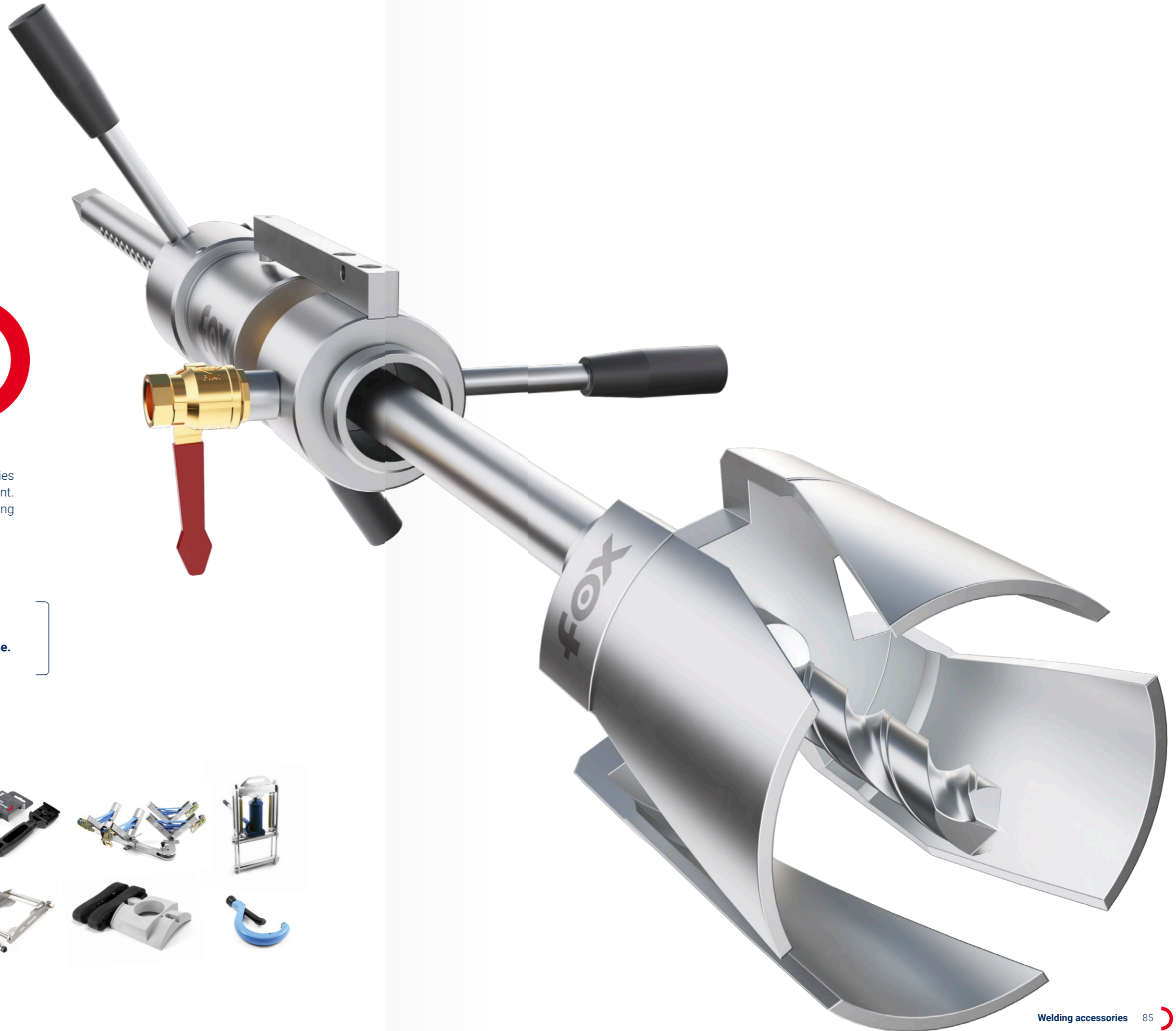


# WELDING ACCESSORIES

FOX offers a wide range of high-quality welding accessories designed to make installation work easier and more efficient. Reliable and durable, they provide essential support during assembly processes.



All welding accessories are available in a dedicated catalogue.





43-330 Wilamowice  
Wieżniow Oswiecimia 50  
Poland

+48 33 845 70 23  
+48 33 432 24 50

office@foxfittings.com  
**foxfittings.com**

**FOX FITTINGS  
ROMANIA SRL**

Str. Republicii nr. 63  
107250 Filipeştii de Târg  
Judeţul Prahova,  
Romania

**FOX FITTINGS  
ITALIA S.R.L.**

Via della Tecnica 15  
35035 Mestrino (PD)  
Italy

**FOX FITTINGS  
ESPAÑA SL**

Poligon industrial,  
Camí de Vilapou, Nau 30,  
08640 Olesa de Montserrat,  
Barcelona,  
Spain

**FOX FITTINGS  
MIDDLE EAST FZE**

P1-ELOB Office  
No. E2-127G-12,  
Hamriyah Free Zone  
Sharjah  
United Arab Emirates

**FOX FITTINGS  
SAUDI ARABIA**

8125 Prince Sultan Rd,  
AR Rawdah District,  
Jeddah 23435,  
Saudi Arabia